

# **Worksoft Impact Installation Guide**

# Worksoft Impact Installation Guide

## Version 14.5

© Copyright 2025 by Worksoft, Inc. All rights reserved.

Worksoft is a business name of Worksoft, Inc. Information in this document is subject to change and revision without notice. The software described herein may only be used and copied as outlined in the Software License Agreement. No part of this manual may be reproduced by any means, electronic or mechanical, for any purpose other than the purchaser's personal use, without prior written permission from Worksoft.

Worksoft provides this documentation "as is" without warranty of any kind, either express or implied. Worksoft may revise information in this document without notice and does not represent a commitment on the part of Worksoft, Inc.

Worksoft, Inc. may have patents or pending patent applications covering subject matter in this document. The furnishing of this document does not give you any license to these patents except as expressly provided in any written license agreement from Worksoft, Inc.

## Trademarks

Worksoft Certify® is a registered trademark of Worksoft, Inc.

All other trademarks and trade names mentioned in this guide are the property of their respective owners.



# Table of Contents

- Chapter 1 Creating the Worksoft Impact Database ..... 4**
  - Installation Prerequisites ..... 5
  - Creating a Worksoft Impact Database ..... 6
- Chapter 2 Installing and Configuring Worksoft Impact ..... 7**
  - Installing Worksoft Impact ..... 8
  - Registering Worksoft Impact ..... 12
  - Configuring an SAP Connection in the Worksoft Portal ..... 14
- Appendix A Worksoft Impact Silent Installation ..... 19**



# Chapter 1      Creating the Worksoft Impact Database

---

## In This Chapter

Installation Prerequisites .....	5
Creating a Worksoft Impact Database .....	6

---

---

## Installation Prerequisites

---

Before installing and configuring Worksoft Impact, complete the following tasks:

- ◆ Verify that your system meets the requirements listed in the Worksoft Help Portal:
  - [Worksoft Application Server](#)
  - [Database Server](#)
- ◆ Configure your application server.
- ◆ Install and configure the Worksoft Portal and all infrastructure services on the application server.

The Worksoft Portal is an administration tool that registers the following information for Worksoft products:

- Database settings
- Licenses
- Users
- Groups
- Email SMTP settings
- Tenants
- Integrations

For more information about configuring your application server and installing the Worksoft Portal, see the [Worksoft Infrastructure Services Installation Guide](#) in the [Worksoft Help Portal](#).

- ◆ Install and configure the following Worksoft Products:
  - [Worksoft Certify](#)
  - [Continuous Testing Manager](#)
  - [Worksoft Integration Gateway](#) (For OpenText Application Quality Management (ALM) integration)

---

## Creating a Worksoft Impact Database

---

Before you install Worksoft Impact, you must create a Worksoft Impact database.

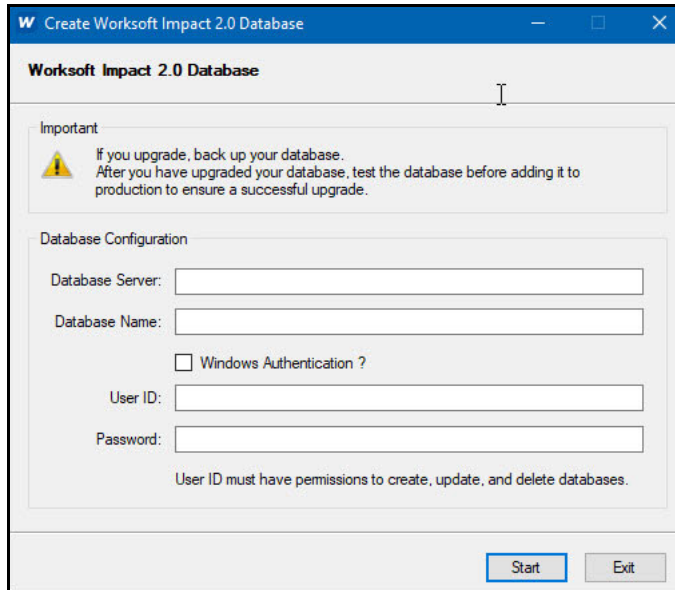
► **To create a Worksoft Impact database:**

- 1 Locate the **Apply.exe** utility within your Worksoft Impact distribution folder:

WorksoftImpact > ImpactDatabaseScripts(version).zip > ImpactDatabaseScripts > ImpactDatabase

- 2 Double-click **Apply.exe**.

The Apply utility opens.



- 3 In the Database Server field, enter the database server name.
- 4 In the Database Name field, enter the database name.
- 5 If you are using Windows authentication security, select the **Windows Authentication** option and go to **Step 7**.
- 6 If you are using SQL database authentication, enter the username and password in the respective fields.
- 7 Click **Start** to begin creating your database.

You must configure the database in Worksoft Portal after you install Worksoft Impact.



Chapter 2

Installing and Configuring Worksoft Impact

In This Chapter

Installing Worksoft Impact .....	8
Registering Worksoft Impact .....	12
Configuring an SAP Connection in the Worksoft Portal .....	14



---

## Installing Worksoft Impact

---

After verifying that your environment has the needed system requirements installed, the Worksoft Portal is installed and configured, and your database has been created, you are ready to install Worksoft Impact.

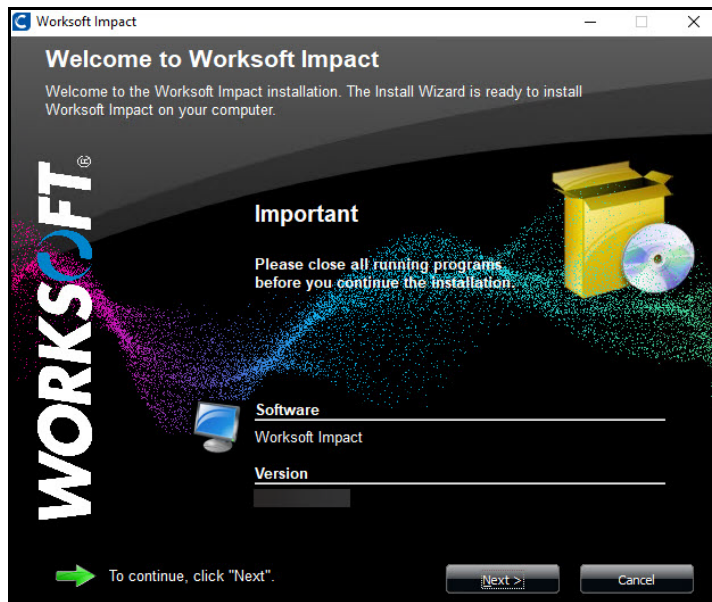
The Impact package consists of the following components:

Component	Description
WorksoftImpact(version).exe	Executable that installs Worksoft Impact.
ImpactDatabaseScripts(version).zip	The zip file contains database scripts that create and upgrade Impact databases.

► **To install Certify Impact:**

- 1 In the software distribution folder, right-click the **WorksoftImpact(version).exe** file and select **Run as administrator**.

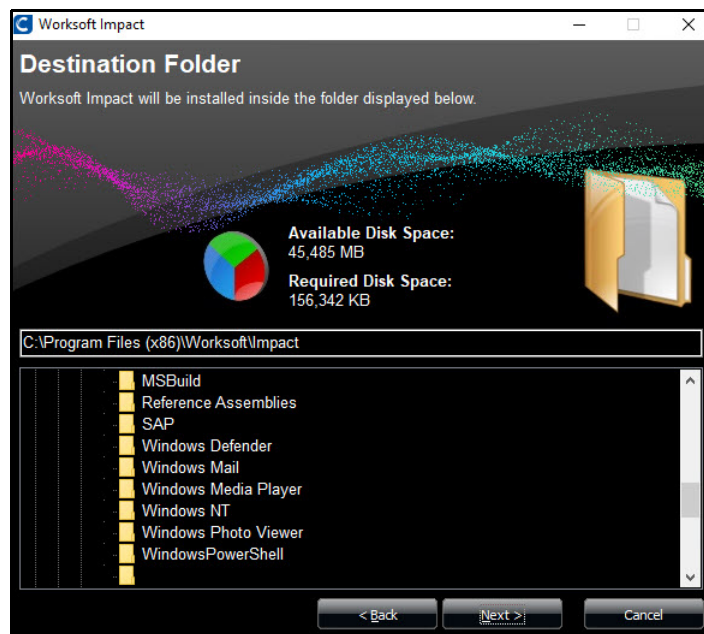
The Worksoft Impact Install Wizard opens.



- 2 Click **Next** to begin the installation process.



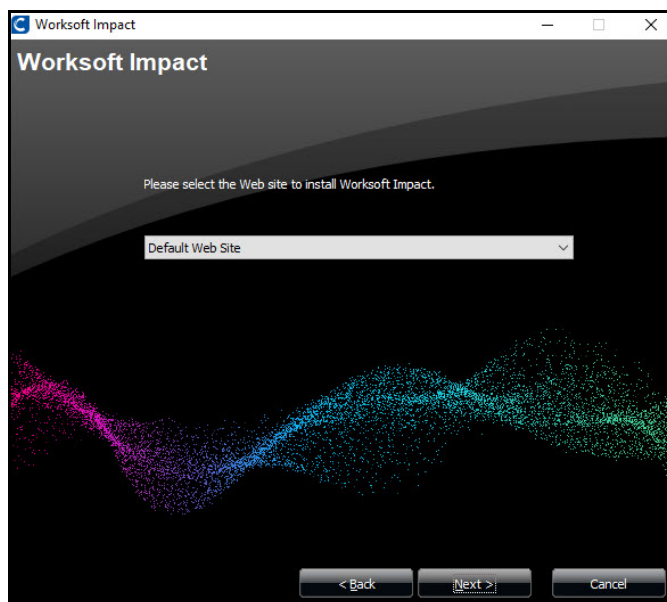
The Destination Folder page opens.



- 3 If you want to accept the default directory for your installation files, click **Next**.

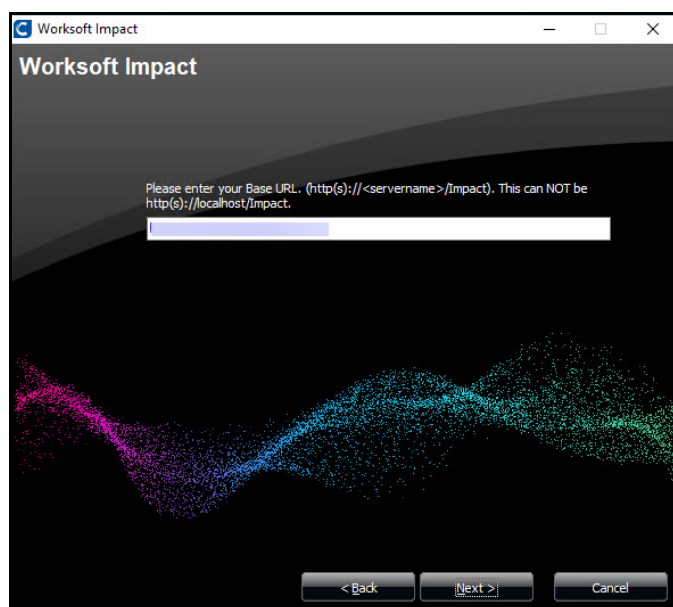
If you do not want to accept the default directory for the installation files, select a different installation directory and click **Next**.

The Worksoft Impact Web Site page opens.



- 4 If you want to accept Default Web Site for your website configured in the IIS, click **Next**.
- 5 If you have other websites configured in the IIS, select the server from the drop-down list and click **Next**.

The Worksoft Impact Base URL page opens.

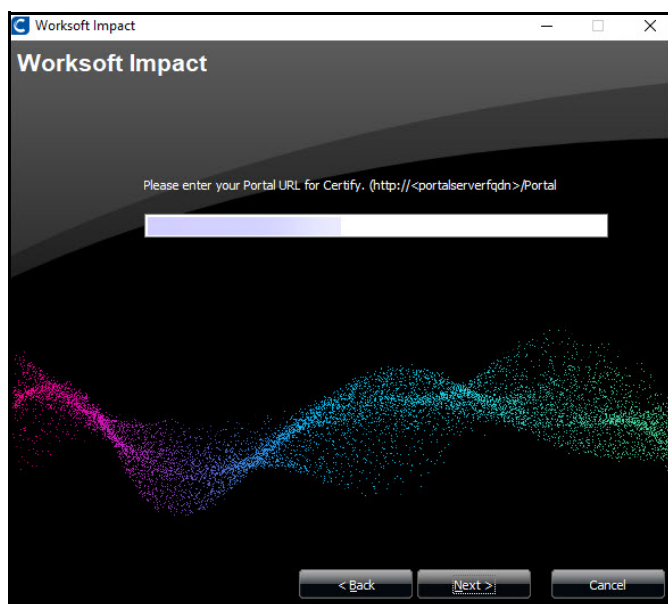


- 6 Enter the Base URL.

Example: `https://<servername>/Impact`

- 7 Click **Next**.

The Worksoft Portal URL page opens.



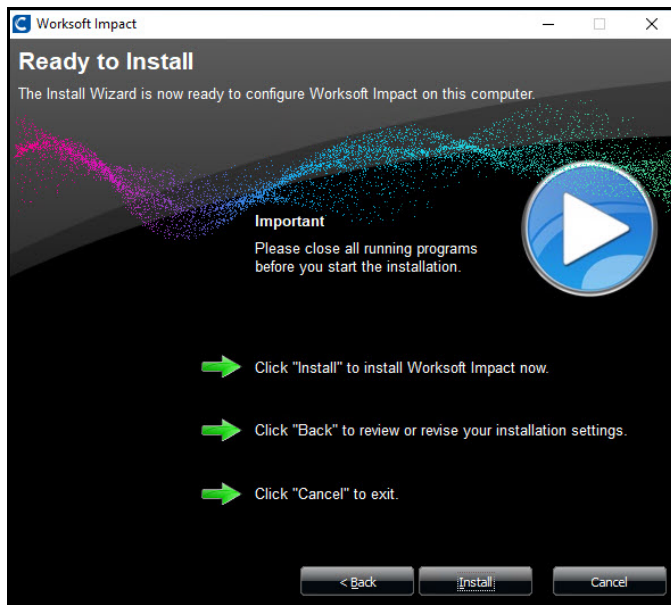
- 8 Enter the external URL address for the Worksoft Portal.

You must use a fully qualified domain name or a Domain Name System (DNS) alias.

Example: `https://servername.worksoft.com`

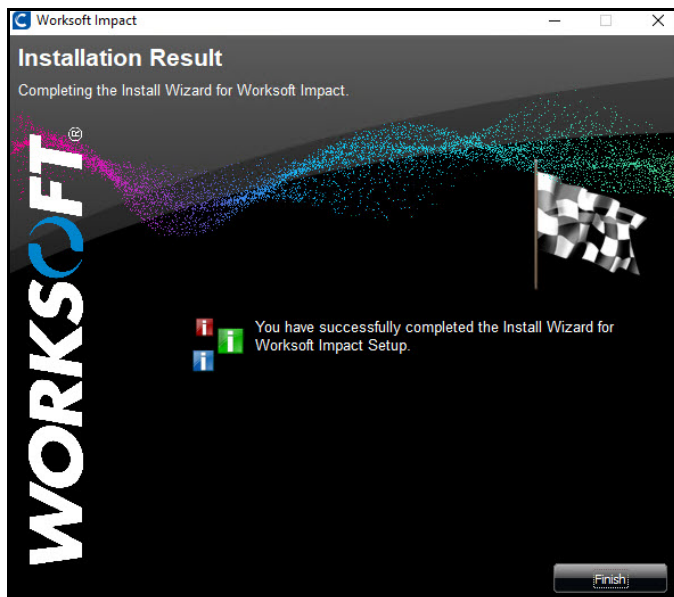
- 9 Click **Next**.

The Ready to Install page opens.



- 10** Click **Install** to begin the installation.

After the installation completes, the Installation Result page opens.



- 11** Click **Finish**.

## Registering Worksoft Impact

You must register Worksoft Impact and configure the database in the Worksoft Portal. Worksoft Impact leverages information from the Portal.

Go to the Worksoft Portal URL address that was used during installation:

`https://<portalservername>/portal`

Example: `https://servername.worksoft.com/portal`

From the Worksoft Portal menu, select **Product Configuration > Impact** to verify the registration.

The first time an administrator signs in to Impact through the URL address, Impact registers automatically in the Worksoft Portal. If, for some reason, it does not automatically register, you can trigger the registration by manually loading Impact at the following site: `http(s)://servername/impact/swagger`

When you create your Impact database, you must select how you want to set up your database security configuration. You need to be a superuser to configure both connections:

- ◆ **User Based Configuration**
- ◆ **Managed Service Identity Configuration**

► **To create an Impact database with a User-Based Configuration connection:**

- 1 From the Worksoft Portal menu, select **Product Configuration > Impact**.

The Database Configuration page opens.

- 2 Select the **User Based Configuration** option.
- 3 In the SQL Server field, enter the server name.
- 4 In the Database Name field, enter the database name.
- 5 If you want to use Windows authentication, select the **Use Trusted Connection (Windows)** option.
- 6 If you want to use SQL Server authentication, enter the SQL Server user name and password in the respective fields.

- 7 Select the **Trust Server Certificate** option.
- 8 Click **Test** to test your database connection.  
A message opens stating if the connection was successful or failed. If the test fails, troubleshoot the database connection.
- 9 Click **OK** to close the message.
- 10 Click **Save** to save your database.  
A message opens stating the connection was successful.

► **To create an Impact database with a Managed Service Identity Configuration connection:**

- 1 From the Worksoft Portal menu, select **Product Configuration > Impact**.

The Database Configuration page opens.

The screenshot shows the 'Impact' configuration page in the Worksoft Portal. The breadcrumb trail is 'Home > Portal Configuration > Product Configuration > Settings > Impact'. The 'Impact' section has a green checkmark and a 'Deregister' button. The 'Database Configuration' section is expanded, showing 'Impact Database Connection - Connected' with a green checkmark. Below this, there are two radio buttons: 'User Based Configuration' (unselected) and 'Managed Service Identity Configuration' (selected). Under 'Managed Service Identity Configuration', there are three input fields: 'SQL Server', 'Database Name', and 'Managed Identity ID'. At the bottom of the form, there are three buttons: 'Test', 'Save', and 'Cancel'.

- 2 Select the **Managed Service Identity Configuration** option.
- 3 In the SQL Server field, enter the server name.
- 4 In the Database Name field, enter the database name.
- 5 In the Managed Identity ID field, enter the ID.
- 6 Click **Test** to test your database connection.  
A message opens stating if the connection was successful or failed. If the test fails, troubleshoot the database connection.
- 7 Click **OK** to close the message.
- 8 Click **Save** to save your database.  
A message opens stating the connection was successful.

---

## Configuring an SAP Connection in the Worksoft Portal

---

To use Worksoft Impact, you must add a SAP connection to the Worksoft Portal. Only superusers and tenant administrators can add SAP connections. Superusers can add, edit, and delete connections from any tenant, and tenant administrators can add, edit, and delete connections in their own tenancy.

You can configure the SAP Connection by selecting one of the following options:

- ◆ Group/Server Selection
- ◆ Custom Application Server
- ◆ Use Connection String

► **To configure an SAP connection with the Group/Server Selection option:**

- 1** Sign in to the Worksoft Portal as an administrator or superuser.
- 2** From the Worksoft Portal menu, select **Portal Configuration > SAP Configuration**.  
The SAP Connection page opens.
- 3** Click the **Add SAP Connection Configuration** button.  
The Add SAP Connection Configuration page opens.

**Add SAP Connection Configuration**

Connection Type: ☒ Group/Server Selection ☐ Custom Application Server ☐ Use Connection String **ACTIVE**

Connection Name:

System Id:

Instance Number:

SAProuter:

Group/Server:

Message Server:

Client:

User Id:

Password:

- 4** If not selected, select the **Group/Server Selection** option.
- 5** To enable or disable the SAP Connection Configuration, use the **Active** toggle button.

**6** Enter the following information:

Field	Description
<b>Connection Name</b>	Enter a name for your SAP connection. Connection names can only have alphanumeric and space values.
<b>System Id</b>	Enter the three- character System ID identifier for the specific SAP system.
<b>Instance Number</b>	<i>(Optional)</i> Enter the two-digit instance number identifier. Only numbers are accepted.
<b>SAP Router</b>	<i>(Optional)</i> Enter the SAP router that provides secure network connections.
<b>Group Server</b>	Enter the group/server name you intend to use.
<b>Message Server</b>	Enter the message server name you intend to use.
<b>Client</b>	Enter the SAP client you intend to use.
<b>User ID</b>	Enter the SAP user ID.
<b>Password</b>	Enter the SAP password.

**7** Click **Test**.

A message opens stating if the connection works.

**8** Click **Save**.

A message opens stating your connection configuration is saved.

**9** Click **OK**.

The SAP Connection appears in the SAP Connection page.

Add SAP Connection Configuration

Search

Connection Name ↑↓	Connection Type ↑↓	Status ↑↓	Action
	All	All	
sapconnection1	Custom Application Server	Active	<div><div></div><div></div></div>
SAPConnection	Custom Application Server	Active	<div><div></div><div></div></div>

<<

<

1

>

>>

10

▼



► **To configure an SAP connection with the Custom Application Server option:**

- 1 Sign in to the Worksoft Portal as an administrator or superuser.
- 2 From the Worksoft Portal menu, select **Portal Configuration > SAP Configuration**.  
The SAP Connection page opens.
- 3 Click the **Add SAP Connection Configuration** button.  
The Add SAP Connection Configuration page opens.

- 4 If not selected, select the **Custom Application Server** option.
- 5 To enable or disable the SAP Connection Configuration, use the **Active** toggle button.
- 6 Enter the following information:

Field	Description
<b>Connection Name</b>	Enter a name for your SAP connection. Connection names can only have alphanumeric and space values.
<b>System Id</b>	Enter the three- character System ID identifier for the specific SAP system.
<b>Instance Number</b>	<i>(Optional)</i> Enter the two-digit instance number identifier. Only numbers are accepted.
<b>SAP Router</b>	<i>(Optional)</i> Enter the SAP router that provides secure network connections.

Field	Description
<b>Application Server</b>	Enter the application server name you intend to use.
<b>Client</b>	Enter the SAP client you intend to use.
<b>User ID</b>	Enter the SAP user ID.
<b>Password</b>	Enter the SAP password.

- 7 Click **Test**.  
A message opens stating if the connection works.
- 8 Click **Save**.  
A message opens stating your connection configuration is saved.
- 9 Click **OK**.  
The SAP Connection appears in the SAP Connection page

► **To configure an SAP connection with the Use Connection String option:**

- 1 Sign in to the Worksoft Portal as an administrator or superuser.
- 2 From the Worksoft Portal menu, select **Portal Configuration > SAP Configuration**.  
The SAP Connection page opens.
- 3 Click the **Add SAP Connection Configuration** button.  
The Add SAP Connection Configuration page opens.

- 4 If not selected, select the **Use Connection String** option.
- 5 To enable or disable the SAP Connection Configuration, use the **Active** toggle button.

- 6** Enter the following information:

Field	Description
<b>Connection Name</b>	Enter a name for your SAP connection.  Connection names can only have alphanumeric and space values.
<b>Connection String</b>	Enter the connection string.
<b>Password</b>	Enter the SAP password.

- 7** Click **Test**.  
A message opens stating if the connection works.
- 8** Click **Save**.  
A message opens stating your connection configuration is saved.
- 9** Click **OK**.  
The SAP Connection appears in the SAP Connection page.



## Appendix A      Worksoft Impact Silent Installation

### Install with all defaults:

Install on default path C:\Program Files (x86)\Worksoft:

```
<InstallerPath>\WorksoftImpact.exe /s
```

### Provide Non-default website:

```
<InstallerPath>\WorksoftImpact.exe /s
```

### Provide portal URL during silent install:

```
https://<portalservername>/portal /s
```

Example: `https://servername.worksoft.com/portal /s`

### Provide default install location override:

```
<InstallerPath>\WorksoftImpact.exe /s TargetDir="C:\Temp\"
```

### Silent Uninstall:

```
WorksoftImpact.exe /s MODIFY=FALSE REMOVE=TRUE UNINSTALL=YES
```