



Installation Guide

**Worksoft Certify[®] Integration with
SAP[®] Solution Manager**

Worksoft Certify Integration with SAP Solution Manager Installation Guide

Version 7.2

© Copyright 2020 by Worksoft, Inc. All rights reserved.

Worksoft is a business name of Worksoft, Inc. Information in this document is subject to change and revision without notice. The software described herein may only be used and copied as outlined in the Software License Agreement. No part of this manual may be reproduced by any means, electronic or mechanical, for any purpose other than the purchaser's personal use, without prior written permission from Worksoft.

Worksoft provides this documentation "as is" without warranty of any kind, either express or implied. Worksoft may revise information in this document without notice and does not represent a commitment on the part of Worksoft, Inc.

Worksoft, Inc. may have patents or pending patent applications covering subject matter in this document. The furnishing of this document does not give you any license to these patents except as expressly provided in any written license agreement from Worksoft, Inc.

Patent

Worksoft Certify®

U.S. Patent No. 7,600,220

Trademarks

Worksoft Certify® is a registered trademark of Worksoft, Inc.

All other trademarks and trade names mentioned in this guide are the property of their respective owners.

Third-Party Copyrights

This product includes software developed and copyrighted by the following persons or companies:

Data Dynamics, Ltd., ActiveReports

Microsoft® Enterprise Library

Infragistics® NetAdvantage®

Apache Logging Services log4net

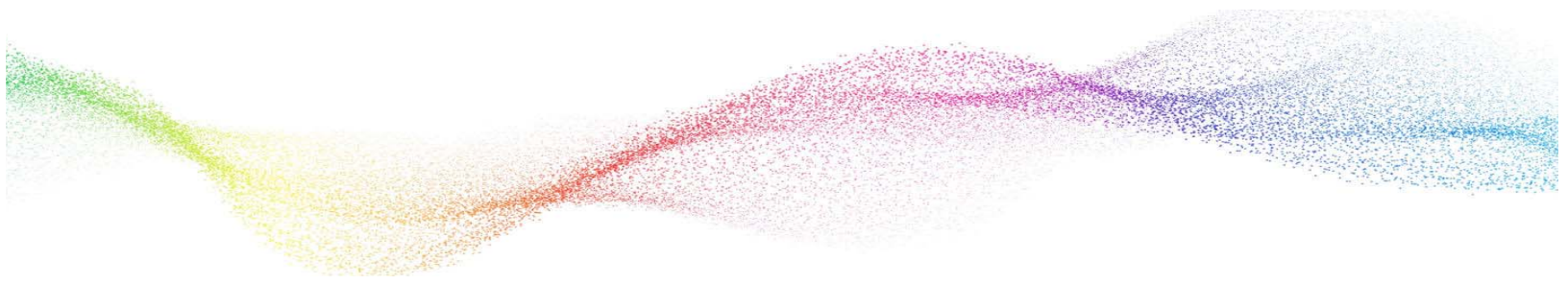
Antlr ANTLR

The above copyright holders disclaim all responsibility or liability with respect to its usage or its effect upon hardware or computer systems.



Table of Contents

Chapter 1 Overview	4
Understanding Worksoft Certify and SAP Solution Manager Integration	5
Test Results	5
Certify and Solution Manager Link	5
Chapter 2 Configuring SAP Solution Manager	7
Overview	8
Setting Up SAP eCATT	8
Registering Certify as a Third-Party Test Tool	13
Creating an eCATT Role and User Account	16
Chapter 3 Configuring Worksoft Certify	19
Creating a User Named ECATTUser in Certify	20
Configuring Global Settings for Solution Manager Integration	21
Chapter 4 Bypassing Certify User Sign-in Prompt in Solution Manager	23
Overview	24
Configuring Certify User Sign-in Prompt to Off	24
Chapter 5 Configuring Multiple Solution Manager Integrations	27
Overview	28
Setting Up Multiple Solution Manager Integrations	28
Appendix A Troubleshooting	34
Verifying ECATT_ET_USR User is Not Locked	34
Troubleshooting Solution Manager Passwords	35
Appendix B Setting Explicit Permissions for Clients	36
Changes and Transports for Client-Specific Objects Options	37
Cross-Client Object Changes	37
Protection: Client Copier and Comparison Tool	38
CATT and eCATT Restrictions	38



Chapter 1 Overview

In This Chapter

Understanding Worksoft Certify and SAP Solution Manager Integration 5

Understanding Worksoft Certify and SAP Solution Manager Integration

By integrating Worksoft Certify® with SAP® Solution Manager, you can create, edit, execute, and view the results of the Certify processes from within SAP Solution Manager.

You will be able to leverage SAP and Worksoft Best Practices for the following:

- ◆ Test organization
- ◆ Test execution
- ◆ Test package status analysis

Solution Manager contains test assets and links to the business processes to be validated, and Certify contains the automated and manual test processes, as well as the associated test assets to enable test automation.

As your test processes are defined and documented in Certify, you may want to link them back to SAP Solution Manager in order to have:

- ◆ An original inventory of business processes
- ◆ A central point of project governance

Test Results

Also, if you integrate Solution Manager with Certify, then test results are returned to both Certify and Solution Manager. You can store all results in a single repository in Solution Manager and ensure that the business requirements have been met by viewing your test packages and Test Workbench.

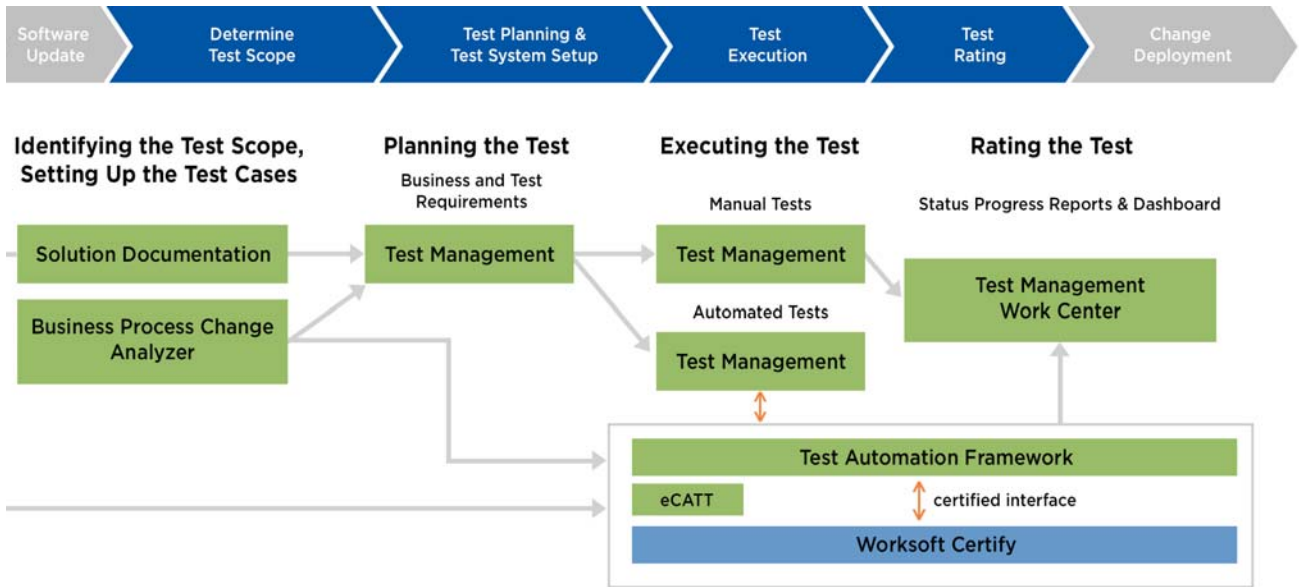
The Test Workbench provides a high-level view of the automation results in Solution Manager. You can check at any time the progress of individual test cases or an entire test package with the Test Workbench.

Certify and Solution Manager Link

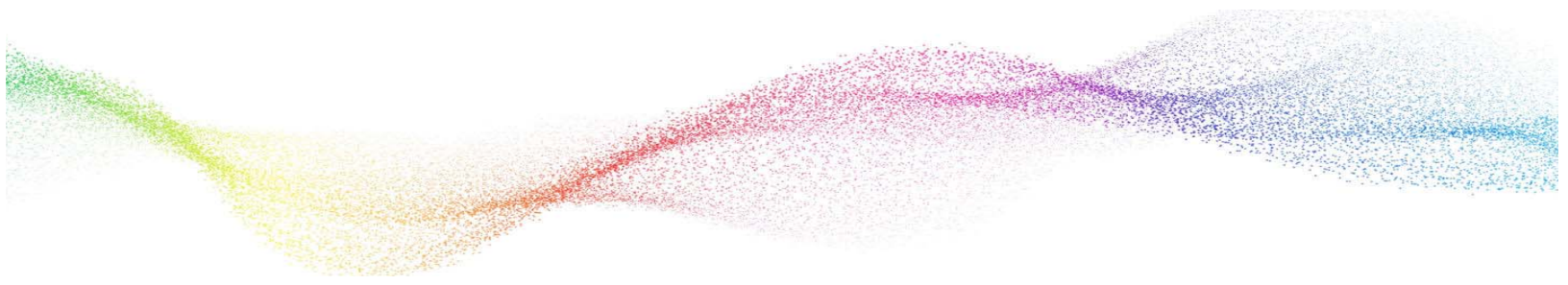
Certify test processes are linked to the business processes in Solution Manager. From Solution Manager, you can:

- ◆ Create new Certify processes
- ◆ Edit existing Certify processes
- ◆ Execute Certify processes by invoking Certify for execution
- ◆ Review test results

Test configurations are defined in Solution Manager, and these configurations point to an internal test script and the associated Certify process.



To integrate Certify with SAP Solution Manager, you must have a basic understanding of Solution Manager, and Solution Manager business processes must already have been created.



Chapter 2 Configuring SAP Solution Manager

In This Chapter

Overview	8
Setting Up SAP eCATT	8
Registering Certify as a Third-Party Test Tool	13
Creating an eCATT Role and User Account	16

Overview

In order to integrate SAP Solution Manager with Worksoft Certify, you will need to utilize SAP's extended Computer Aided Test Tool (eCATT), which is the SAP's document interface for communication between SAP and testing applications. Your eCATT must be set up correctly in order to implement this integration with Certify.

This chapter will guide you on how to make the following changes to your SAP Server:

- ◆ Set up your SAP extended Computer Aided Test Tool (eCATT).
- ◆ Register Certify as a test tool.
- ◆ Enable third-party test case types.
- ◆ Create a new SAP user to communicate between SAP eCATT and Certify.

Before you begin, you will need to:

- ◆ Install both Certify and the SAP GUI client on the client machine where you will be using Certify in combination with your SAP Solution Manager.
- ◆ If you access your SAP Server through an SAP gateway, then you must create a registry key on the client that defines your default SAP GUI connection.

Setting Up SAP eCATT

The SAP Central Test Management System uses an eCATT test script to test all of the components on all systems. The test system and the central test management system communicate through the remote function call (RFC) interface. Even for an automated test run, a connection via RFC always requires an interaction with the user because the client, user name, and password must be re-entered for every system called by RFC. Although this problem could be solved by storing the logon data in the RFC connection, it is not recommended for security reasons.

The procedure recommended by SAP is to set up a trusted RFC connection that requires neither a manual logon to the target server nor the logon data be stored anywhere. An exact instruction for setting up a trusted RFC connection can be found in SAP Note 128447.

When you set up your SAP eCATT, you must do the following tasks:

- ◆ Verify the SAP support package level.
- ◆ Create explicit permissions for every client that will test via eCATT.
- ◆ Enable scripting with transaction rz11.
- ◆ Remove existing parameter pre-assignments.

► **To verify SAP support package level:**

First, all systems to be tested must fulfill specific minimum requirements regarding the installed support package levels.

You will need to verify that your system meets the required support package level. For more information about required release and support levels, see SAP Note 519858.

► **To create explicit permission for every client that will test via eCATT:**

An explicit permission must be set for every client that has an automated test which will run via eCATT.

1 From Solution Manager, type the transaction code `scc4` in the Command field of the SAP toolbar.

2 Press **<Enter>**.

The Display View Contents: Overview screen appears.

3 Click the **Display > Change**  button.

The New Entries button appears.

4 Click the **New Entries** button.

The New Entries: Details of Added Entries screen appears.

5 Fill in the information about the client.

6 In the Changes and Transports for Client-Specific Objects section, select the **Automatic Recording of Changes** option.

7 In the Cross-Client Object Changes field, select **Changes to Repository and cross-client Customizing allowed** from the drop-down list.

8 In the CATT and eCATT Restrictions field, select one of the following options.

Option	Description
eCATT and CATT not Allowed	Prevents test scripts to be started in the client.
eCATT and CATT Allowed	Enables you to implement eCATT and CATT without restrictions. Using inline ABAP and function modules, any code can be run on the target system (security).
eCATT and CATT Only Allowed for 'Trusted RFC'	Automated test cases can be started only if the target system has been addressed via a trusted RFC connection. In this case, the full range of functions can be implemented for tests on this client.
eCATT Allowed, but FUN/ABAP and CATT not Allowed	Only transactions can be executed in the target client. They must be addressed via eCATT.
eCATT Allowed, but FUN/ABAP and CATT only for 'Trusted RFC'	This protection level allows calling function modules and executing inline ABAP provided that the connection to the target system is established via a trusted RFC.

9 Repeat the process to create all of your clients.

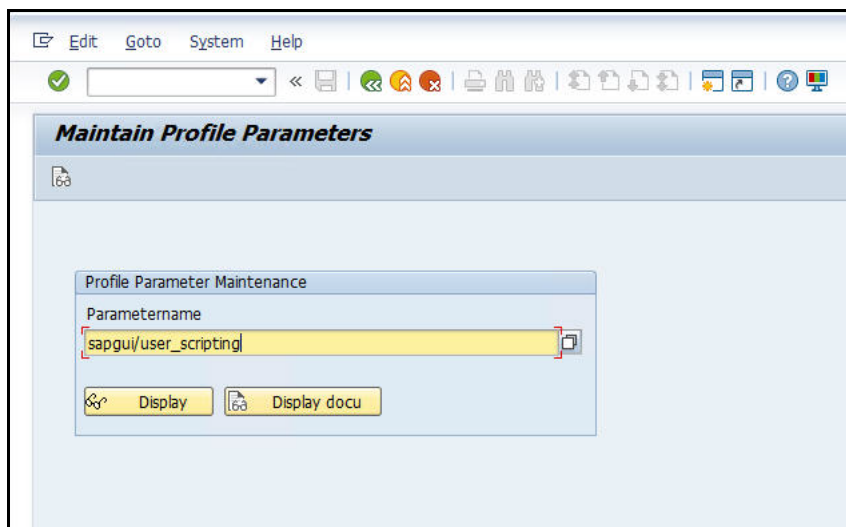


Note: For further information on how these permission settings affect test creation, test execution, or Technical Bill of Materials (TBOM) generation, see [Appendix B "Setting Explicit Permissions for Clients."](#)

► **To enable scripting with transaction rz11:**

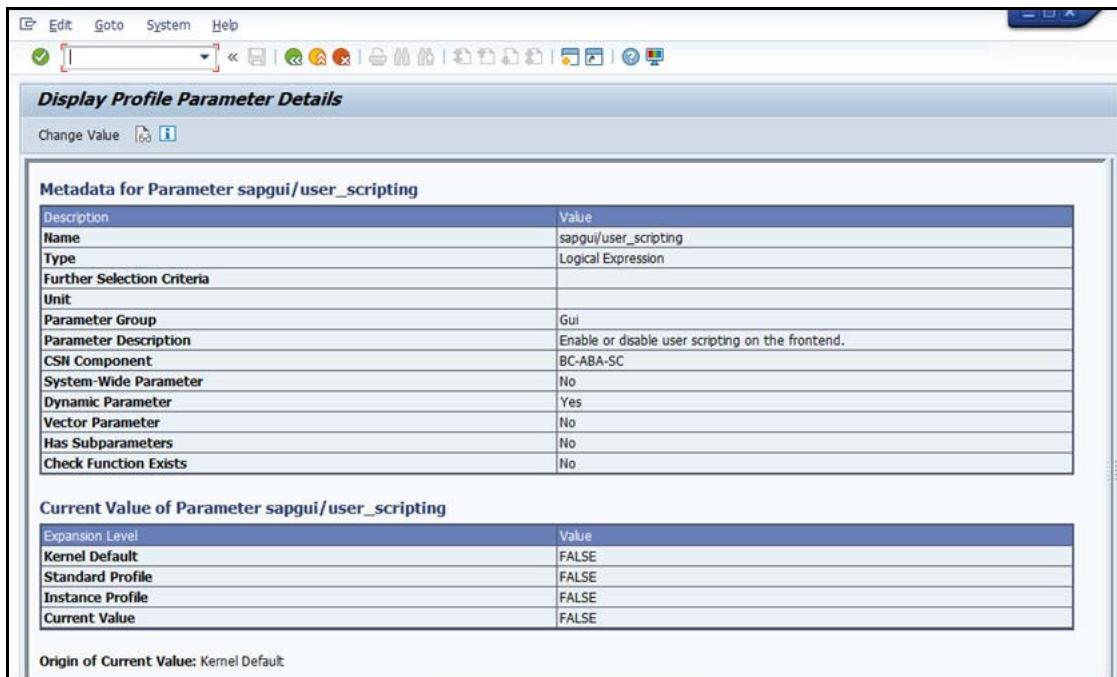
- 1 From the SAP GUI interface, type `rz11` in the Command field of the SAP toolbar.
- 2 Press **<Enter>**.

The Maintain Profile Parameter screen appears.



- 3 In the Param Name field, type the following: `sapgui/user_scripting`.
- 4 Click **Display**.

The Display Profile Parameter Details screen appears.



- 5 Click the **Change Value** button.
- The Change Parameter Value screen appears.



- 6 In the New Value field, type `TRUE`.

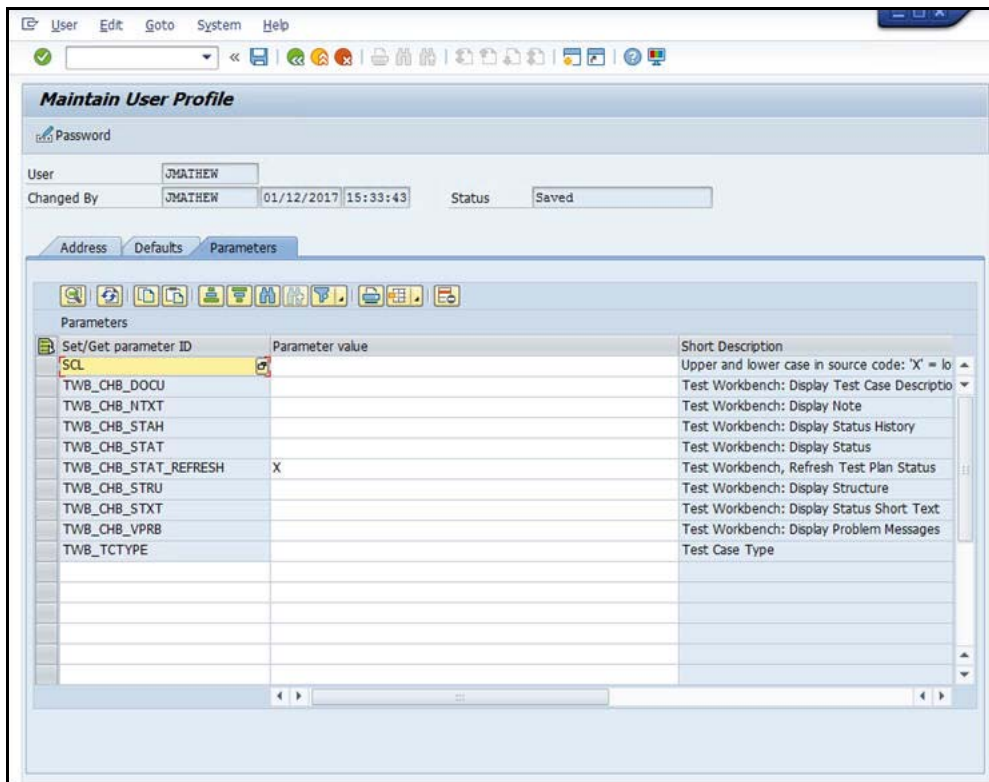
- 7 Click the **Save** button.
- 8 Repeat **Step 3** through **Step 7** for the following parameters:

Parameter	Value
sapgui/user_scripting_disable_recording	FALSE
sapgui/user_scripting_force_notification	FALSE
sapgui/user_scripting_set_readonly	FALSE

► **To remove existing parameter pre-assignments:**

You will need to remove the existing parameter pre-assignments. If the pre-assignments are changed between recording and processing the script, the changed assignment can produce errors. Also, if the script is processed by a different SAP user, then errors can occur.

- 1 From Solution Manager, type the transaction code `STU3` in the Command field of the SAP toolbar.
- 2 Press **<Enter>**.
The Maintain User Profile screen appears.
- 3 Click the **Parameters** tab.
The Parameters tab appears.



- 4 Remove any pre-defined parameter values.
- 5 Click the **Save** button to save the changes.



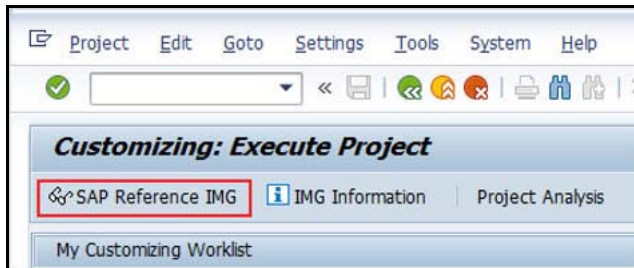
Note: To ensure that no user-specific parameters are predefined, create a new user and use it exclusively for recording. If you need to document the creator of the automatic test case for verification management, use **Transaction SU3** to delete the parameter pre-assignments for your user before recording.

Registering Certify as a Third-Party Test Tool

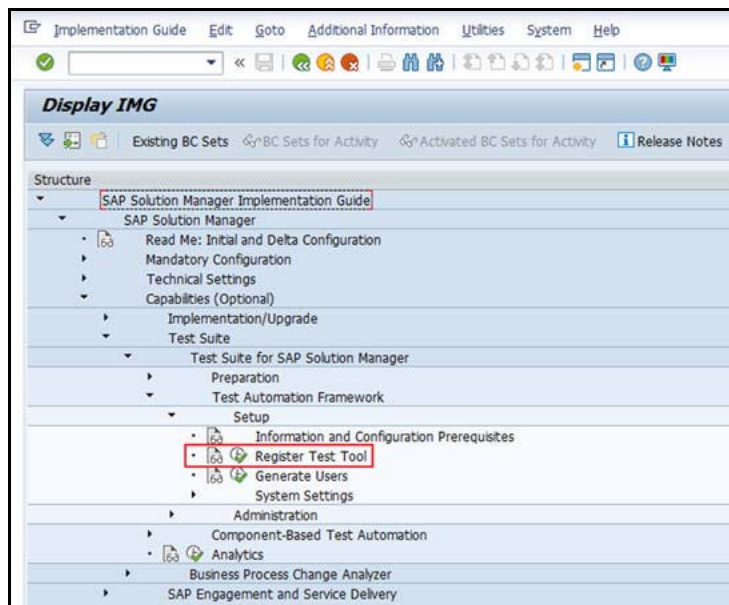
In order to enable the integration with Solution Manager, you must register Worksoft Certify as a third-party test tool. To register Certify as a test tool, you will need to first navigate to the Solution Manager registration tool.

► To navigate to the Solution Manager registration tool:

- 1 From the SAP GUI interface, type the transaction code `SPRO` in the Command field of the SAP toolbar. The Customizing: Execute Project screen appears.



- 2 Click the **SAP Reference IMG** button. The Display IMG screen appears.



3 Navigate to the Register Test Tool: **SAP Solution Manager > Capabilities (Optional) > Test Suite > Test Suite for SAP Solution Manager > Test Automation Framework > Setup > Register Test Tool.**

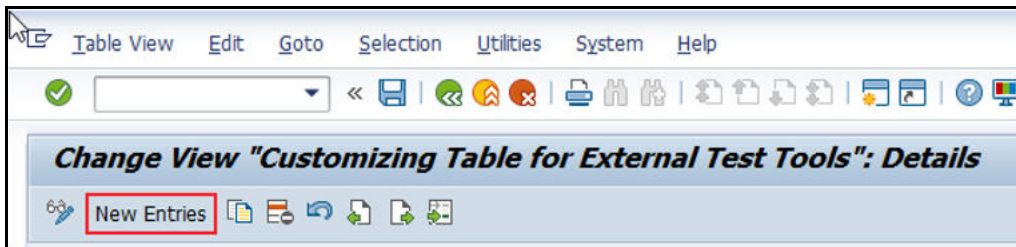
4 Click the **Execute** button to open the registration tool.

The Change View "Customizing Table for External Test Tool" screen appears.

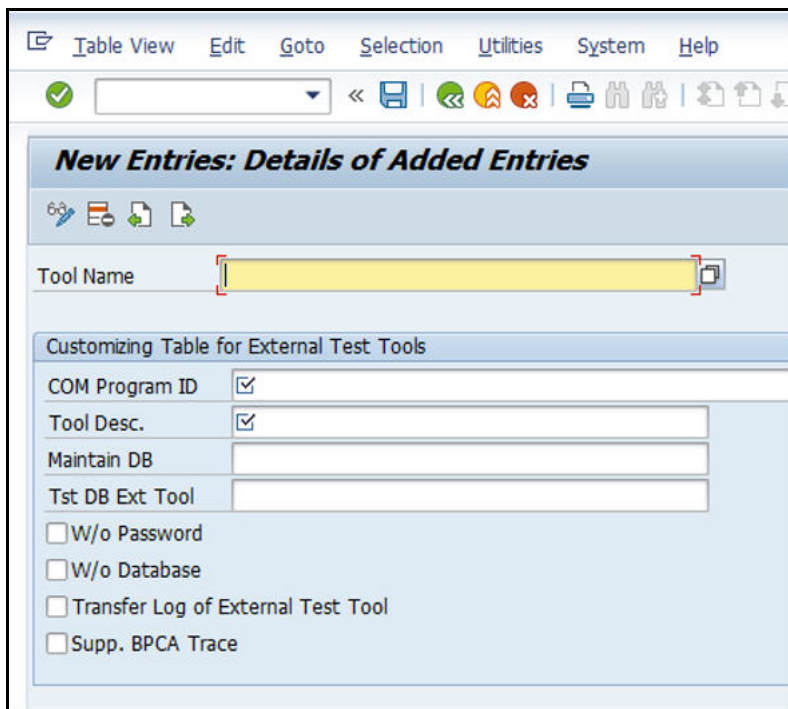
Now that the registration tool is launched, you are ready to register Certify as a third-party test tool.

► **To register Worksoft Certify as a third-party test tool:**

1 From the Change View "Customizing Table for External Test Tool" screen, click the **New Entries** button.



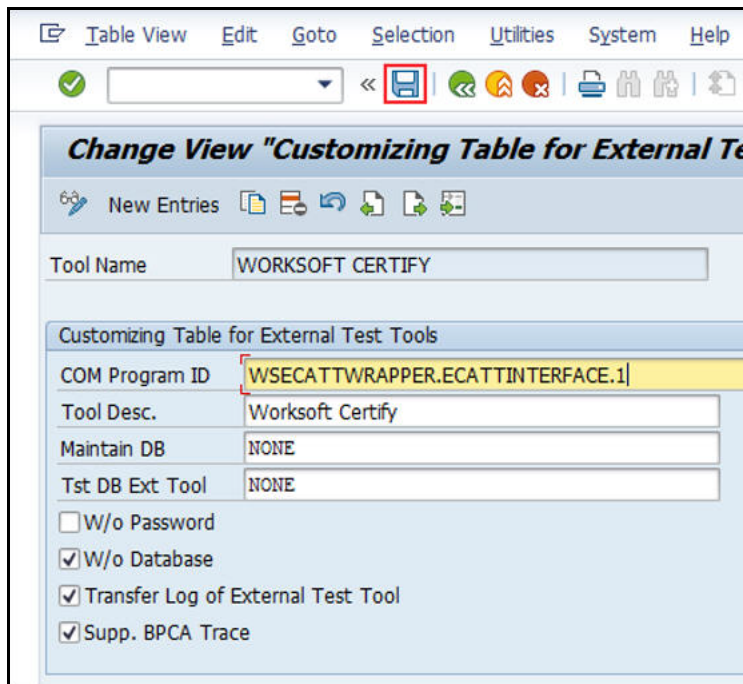
The New Entries: Details of Added Entries screen appears.



2 Type or select the following parameter values:

Parameter	Value
Tool Name	Worksoft Certify
COM Program ID	WSECATTWRAPPER.ECATTINTERFACE.1 This value must be in all uppercase letters.
Tool Description	Worksoft Certify
Maintain DB	NONE
TestExecuteDB	NONE
W/O Password	Unchecked
W/O Database	Checked
Transfer Log	Checked
Supp. BPCA Trace	Checked

3 Click the **Save** button.



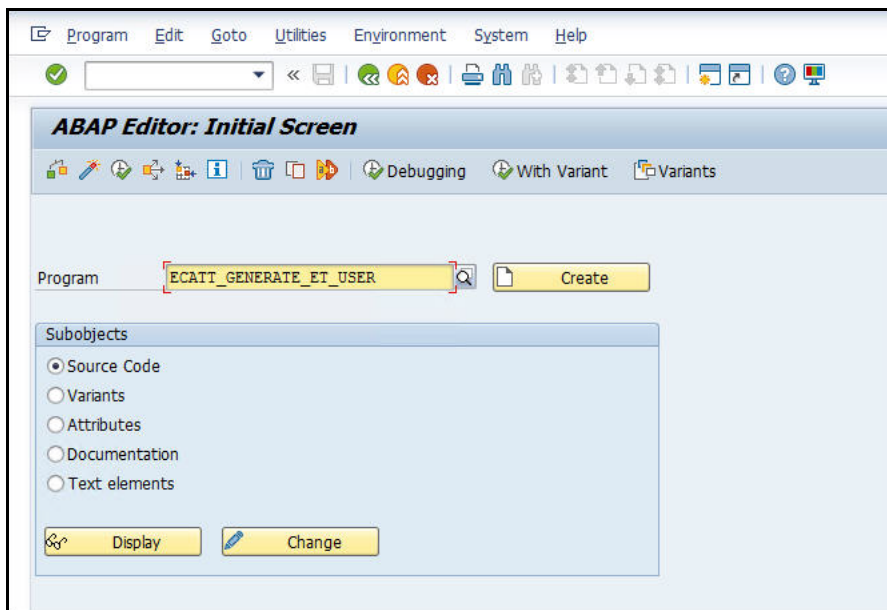
Creating an eCATT Role and User Account


To take advantage of eCATT integration using external tools, a role and user account must be generated by your system administrator.

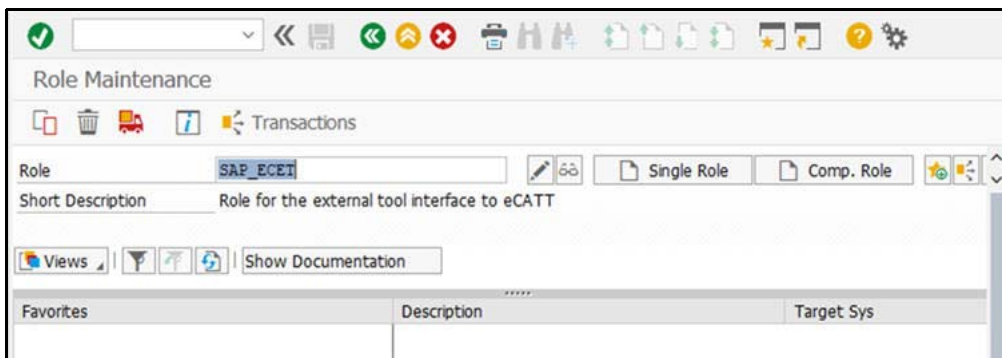
► **To create an eCATT role:**


- 1 From the SAP GUI interface, type the transaction code **SE38** in the Command field of the SAP toolbar.
- 2 Press **<Enter>**.

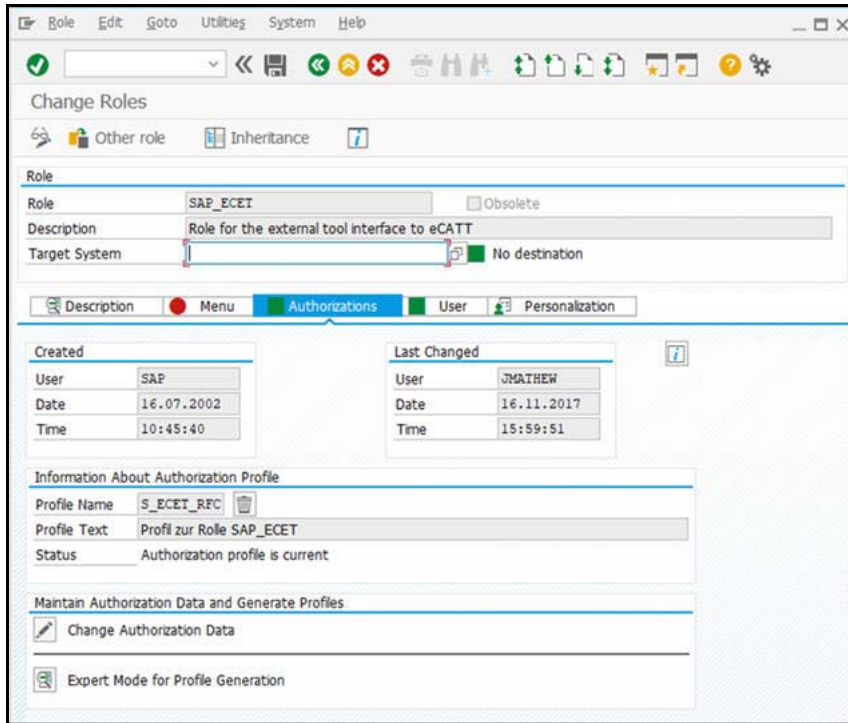
The ABAP Editor screen appears.




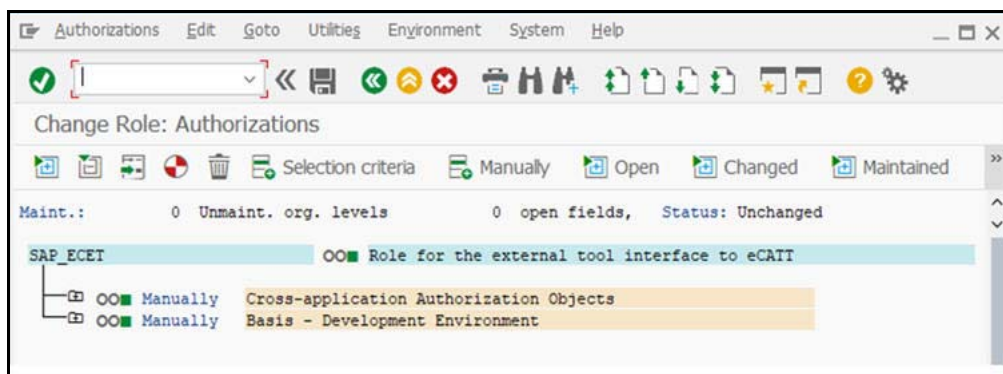
- 3 In the Program field, type **ECATT_GENERATE_ET_USER**.
- 4 Click the **Execute**  button or press **<F8>**.
- 5 After running the program, type the transaction code **PF03** in the Command field of the SAP toolbar.
The Role Maintenance screen appears.



- 6 In the Role field, type `SAP_ECET`.
- 7 Click the **Change**  button. Ignore the subsequent warning the appears. The Change Role screen appears.



- 8 Click the **Authorizations** tab. The Save Role messages appears.
- 9 Click **Yes** to save the role. The Authorizations tab opens.
- 10 Click the **Change Authorization Data**  button. The Change Role: Authorizations screen appears with a hierarchical tree structure displaying the contents of the role.



- 11 Place your cursor over the top node `SAP_ECET` in the tree display.

- From the menu, select **Authorizations > Generate** or click the **Generate**  button from the toolbar.

The SAP_ECET role is generated.

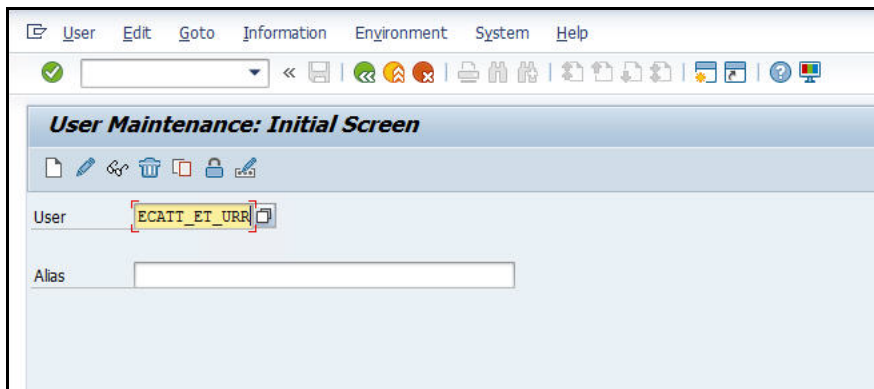
- In the toolbar, click the **Back**  button to return to the Role Maintenance screen.

- Click the **Save** button to save the role.

► **To create an eCatt user account:**

- Type the transaction code `su01` in the Command field of the SAP toolbar.
- Press **<Enter>**.

The User Maintenance screen appears.



- In the User field, type `ECATT_ET_USR`.

- Click the **Change Password**  button.

The Change Password dialog box appears.

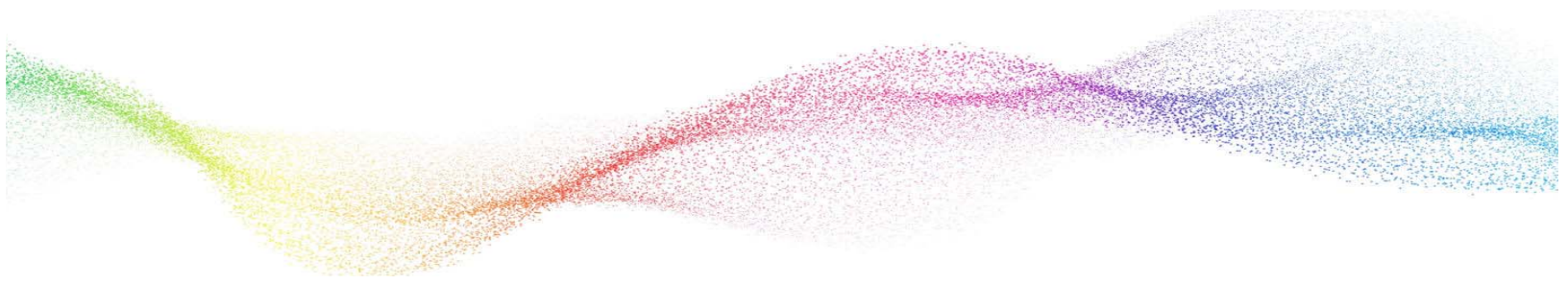
- In the New Password and Repeat Password fields, type a secure password. Passwords are limited to 32 characters.

- Press **<Enter>**.

- Log off of SAP.

Your new user is now enabled to communicate between SAP eCATT and Certify.

Now that you have completed configuring Solution Manager, you will need to configure Certify.



Chapter 3 **Configuring Worksoft Certify**

In This Chapter

Creating a User Named ECATTUser in Certify.....	20
Configuring Global Settings for Solution Manager Integration.....	21

Creating a User Named ECATTUser in Certify

After you have configured your SAP Server, you will now configure Certify. In Certify, you will need to create a Certify user with the name of **ECATTUser**. This new user will help you connect to SAP Solution Manager.

► **To create ECATTUser in Certify:**

- 1** In the Certify Navigation pane, click **Users & Groups**.
The Users & Groups window appears.
- 2** In the Users Summary pane, right-click in the pane and select **New User**.
The New User dialog box appears.
- 3** In the First Name and Last Name fields, type in the first and last name of the user.
The first and last names can have a maximum of 100 characters. Special characters and numbers are allowed in names.
- 4** In the Username text field, type **ECATTUser**. This name is case-sensitive.
- 5** In the New Password and Verify Password text fields, type a password for the user.
Passwords have a minimum of 6 characters and a maximum of 16 characters. Special characters are allowed.
- 6** Select the **Password Never Expires** option.
- 7** Click **OK** to save the new user.

Configuring Global Settings for Solution Manager Integration

The Global Configuration Settings dialog box in Worksoft Certify allows you to edit your current configuration for all users in your organization. Some of the global settings affect Certify integration with SAP Solution Manager.

► **To configure global settings for Solution Manager integration:**

- 1 From the Certify menu, select **Configure > Certify > Certify Global**.

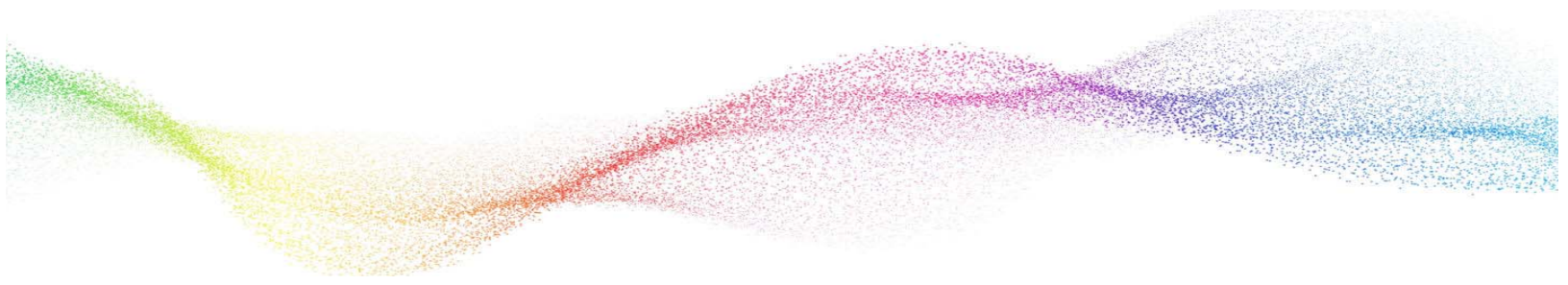
The Global Configuration Settings dialog box opens.

- 2 Select values for the following parameters from the drop-down lists:

Parameter	Description
SAP Process Lock Mode	<p>Select one of the following values:</p> <ul style="list-style-type: none"> • True – Lock assets and do not allow sharing of assets between tests. • False – Do not lock assets and allow assets to be shared. For example, allow a project variable to be used in two different tests linked to Solution Manager. <p>Worksoft recommends the default value False.</p>
SAP Process Serialize Mode	<p>When a process and its related assets (e.g. variables, objects, child processes, layouts, etc.) are stored in the SAP Solution Manager, this parameter controls how much data is actually sent to the Solution Manager.</p> <p>Select one of the following values:</p> <ul style="list-style-type: none"> • Serialize_IDOnly – Store only IDs. • Serialize_FullyPortable – Store all information for all assets as completely as possible. This option has the longest process time. • Serialize_ICL_Variable_RefOnly – Store process and layout information in full form, and store ICL and variable information by ID only. • Serialize_ICL_RefOnly - Store process, layout, and variable information in full form, and store ICL information by ID only. <p>Worksoft recommends the default value <code>Serialize_IDOnly</code>. If you change this value after you have selected the default value, you may have complications with integrating Certify with Solution Manager.</p>

Parameter	Description
<p>SAP Results Serialize Mode</p>	<p>When a result is stored in Solution Manager, this parameter controls how much data is sent to Solution Manager.</p> <p>Select one of the following values:</p> <ul style="list-style-type: none"> • Serialize_IDOnly – Store only IDs. • Serialize_FullyPortable – Store all information for all assets as completely as possible. This option has the longest process time. • Serialize_ICL_Variable_RefOnly – Store process and layout information in full form, and store ICL and variable information by ID only. • Serialize_ICL_RefOnly - Store process, layout, and variable information in full form, and store ICL information by ID only. <p>Worksoft recommends the default value Serialize_IDOnly. If you change this value after you have selected the default value, you may have complications with integrating Certify with Solution Manager.</p>
<p>Default Solman Project</p>	<p>As part of Solution Manager integration, Certify gets registered as a third-party test tool. This parameter indicates whether or not to prompt the user for a user name and password.</p> <p>The Default value is the IntegratedSAP project. The user provides the project name. You are able to override the default project by typing the name of the project into this field. This value must be selected at the beginning of an implementation.</p> <p>If the you select to prompt for a user name and password, then it is not possible to use Certify in a lights-out test because the prompt will appear.</p> <p>If you want to avoid the prompt and enable lights-out testing, then you must mark the Certify registration as to not require a password.</p>
<p>Solman Result User</p>	<p>Select a user who has permission to launch the Certify Result Viewer from the SAP Solution Manager. Use the value set in SolmanResultUser or the well-known user name ECATTUser.</p>
<p>Use Solman User in Certify</p>	<p>From the drop-down menu, select True to use the current Solution Manager user name to log into Certify. By setting it to True, the user is authenticated when you launch Worksoft Certify, and you avoid being prompted for credentials. For more information on how to configure this option, see Chapter Chapter 4, "Bypassing Certify User Sign-in Prompt in Solution Manager," on page 23.</p>

3 Click **OK** to save your global settings.



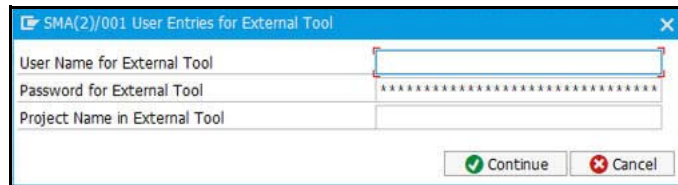
Chapter 4 Bypassing Certify User Sign-in Prompt in Solution Manager

In This Chapter

Overview	24
Configuring Certify User Sign-in Prompt to Off	24

Overview

When Worksoft Certify is launched from the SAP Solution Manager, you need to enter your Certify credentials in order to access the Process Editor.



Configuring Certify User Sign-in Prompt to Off

To turn the authentication prompt off, you need to make changes to Solution Manager settings and Certify settings. Complete the following tasks to disable the sign-in prompt:

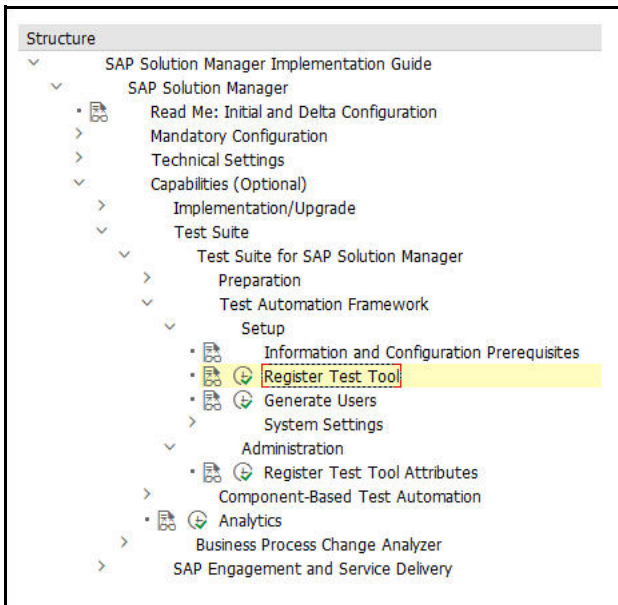
- ◆ Turn off prompt for user and project in Solution Manager.
- ◆ Configure the **Use Solman User in Certify** option in Certify.
- ◆ Set a Certify project.
- ◆ Set user permissions in Certify.

▶ **To turn off prompt for user and project in Solution Manager:**

- 1 Implement **SAP Note 2715012** to support this feature.
- 2 Navigate to the Solution Manager registration tool.
- 3 From the SAP GUI interface, type the transaction code **SPRO** in the Command field of the SAP toolbar.
The Customizing: Execute Project screen appears.
- 4 Click the **SAP Reference IMG** button.
The Display IMG screen appears.

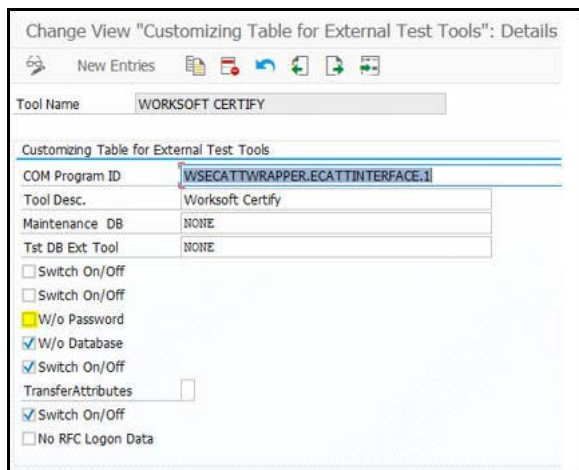
5 Navigate to the Register Test Tool:

SAP Solution Manager > Capabilities (Optional) > Test Suite > Test Suite for SAP Solution Manager > Test Automation Framework > Setup > Register Test Tool



6 Click the **Execute** button to open the registration tool.

7 Select the **W/o Password** option to turn off the prompt for Certify credentials (User Entries for External Tool).



8 Save your changes.

Now you will need to configure Certify.

► **To configure the Use Solman User in Certify option in Certify:**

- 1 From the Certify menu, select **Configure > Certify > Certify Global**.

The Global Configuration Settings dialog box opens.

- 2 Scroll down to the **Use Solman User in Certify** option.

- 3 From the drop-down menu, select **True** to use the current Solution Manager user name to log into Certify.

By setting it to True, the user is authenticated when you launch Worksoft Certify. Certify will map the current Solution Manager user name to an existing Certify user with the same login name for authorization.

Ensure that a Certify user is created with the same login name with the required permissions.

► **To set a Certify project:**

When Certify is launched from Solution Manager for a new test configuration, a default project can be set using a user variable. If this is not defined, Certify will prompt to select a project.

To avoid being prompted, you need to create a new user variable named `DEFAULT_SOLMAN_PROJECT`. You can create the new user variable in two different ways:

- ◆ From the Extensions window

For information on how to create user variables in the Extensions window, go to the [Worksoft Help Portal](#). Set the default value to `DEFAULT_SOLMAN_PROJECT`.

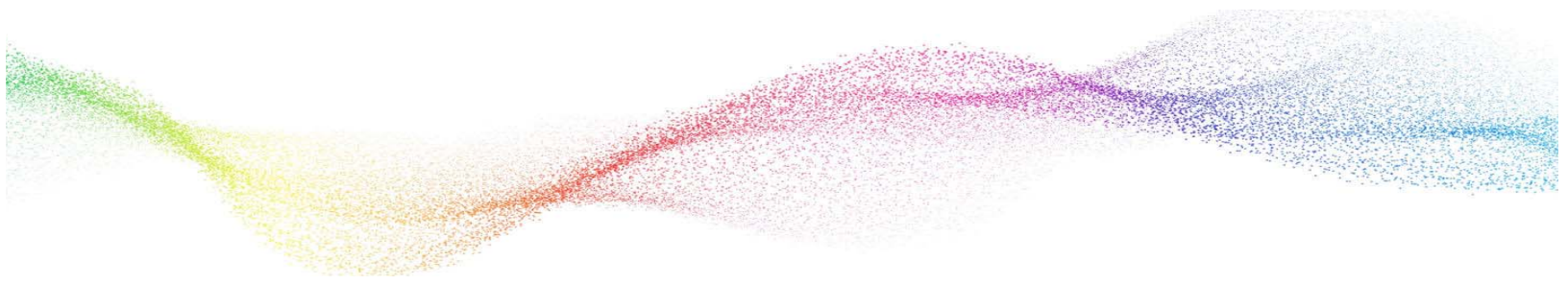
- ◆ From the Certify menu **Tools > Set User Variables**

To set a specific project for individual users, enter a value for the user variable `DEFAULT_SOLMAN_PROJECT` for each user.

► **To set Certify user permissions:**

- 1 Verify that a Certify user exists for each of the Solution Manager users. Certify maps the Solution Manager user name to the Certify login name.
- 2 Grant the required permissions to the mapped users in Certify. Permissions can be set on a user, group, project or folder level. For more information, see the [Worksoft Help Portal](#).
- 3 Verify that the Certify user is active, and it has not expired or disabled.

You have now completed the configuration.



Chapter 5 **Configuring Multiple Solution Manager Integrations**

In This Chapter

Overview	28
Setting Up Multiple Solution Manager Integrations	28

Overview

While integrating with Certify, you are able to manage multiple SAP Solution Manager instances and maintain the three different environments—development, quality assurance testing, and production.

You will need to complete the following tasks:

- ◆ Configure the **Change Multiple Solman Configuration** option in Certify.
- ◆ Create a new script in Solution Manager.
- ◆ Promote a process/script in Certify.
- ◆ Create new versions of the script in Solution Manager for maintenance.
- ◆ Migrate existing Certify processes to Solution Manager.

Setting Up Multiple Solution Manager Integrations

To start your configuration, you need to create the following three root folders in the Certify Processes window:

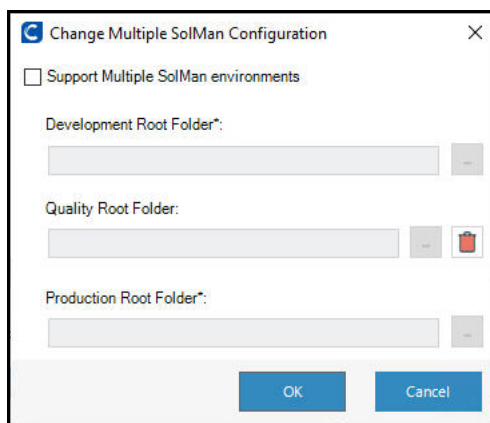
- ◆ Development
- ◆ Quality
- ◆ Production

For more information on how to create process folders, see the [Worksoft Help Portal](#). After you have created these folders, you need to configure the Change Multiple Solman Configuration option in Certify.

► **To configure the Change Multiple Solman Configuration option in Certify:**

- 1 From the Certify menu, select **Configure > Integrations > Solution Manager**.

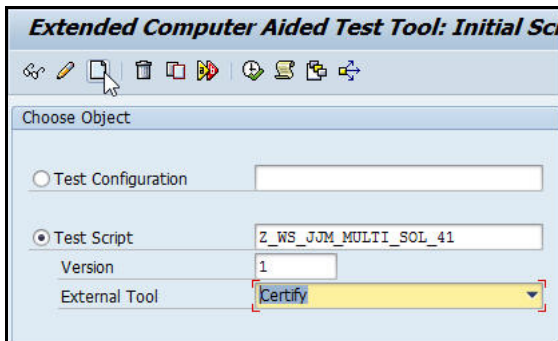
The Change Multiple Solman Configuration dialog box opens.



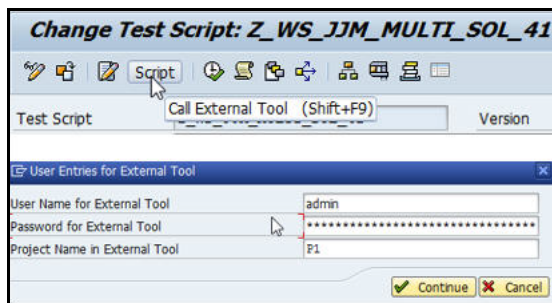
- 2 Select the **Support Multiple Solman Environments** option.
- 3 In the three folder fields, use the Browse button to select the root folders you created in the Processes window.
- 4 Click **OK** to complete the configuration.
Now you will need to open Solution Manager to create a new script.

► **To create a new script in Solution Manager:**

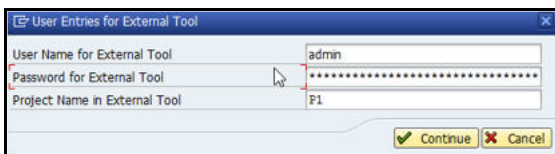
- 1 From Solution Manager, type the transaction code `secatt` in the Command field of the SAP toolbar.
- 2 Press **<Enter>**.



- 3 Create a new script and save it.
- 4 Click on the **Script** button to open Certify.

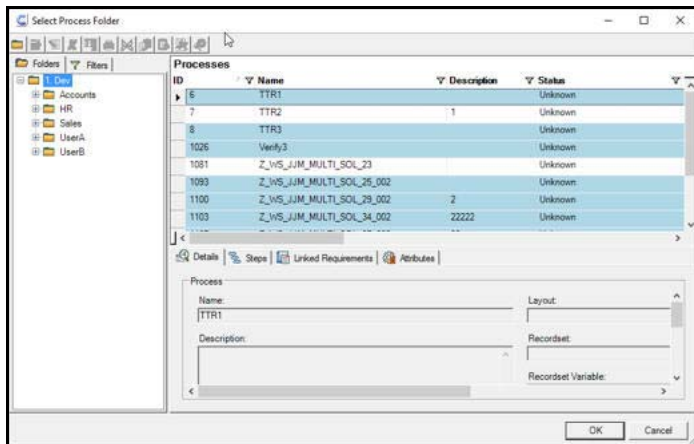


The User Entries for External Tool dialog box opens.



- 5 Enter your Certify credentials.
- 6 Click **Continue**.

The Select Process Folder dialog box opens in Certify.



7 Select the folder where the new process needs to be created.

8 Click **OK**.

The Process Editor opens with the newly created process with the version suffixed to the name.

9 Add the required steps to the process.

10 After you have completed your process, select **SAP > Save and Return to SAP** from the Process Editor menu.

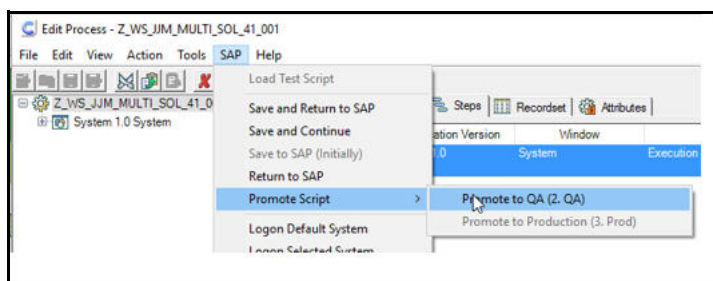
Now you will promote the process/script in Certify.

► **To promote the Certify process with the script:**

The Promote Script feature allows you to auto-detect a new version of a test script from Solution Manager and create a new corresponding Certify process.

1 In Solution Manager, click on the **Script** button to open your Certify process.

2 From the Process Editor menu, select **SAP > Promote Script > Promote to QA**.



The Promote Script message appears.

3 Click **OK** to confirm.

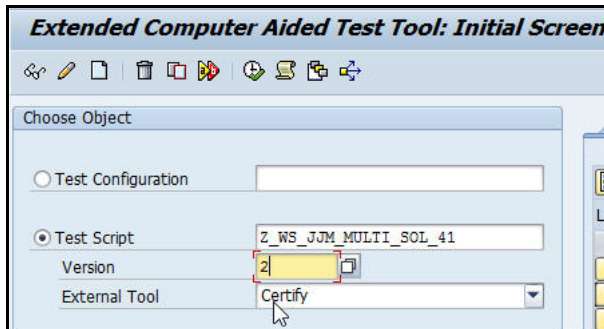
A similar folder hierarchy in the Quality root folder is created and the Certify process is copied to this folder.

4 Repeat this process for the Production folder by selecting **SAP > Promote Script > Promote to Production** and click **OK** to confirm.

After the script has been promoted to the Production folder, you will no longer be able to promote it. You will now need to create a new version of the script for the Maintenance folder.

► **To create a new version of the script for the Maintenance folder:**

- 1 Using the transaction code `secatt` in Solution Manager, create a second version of the same script.

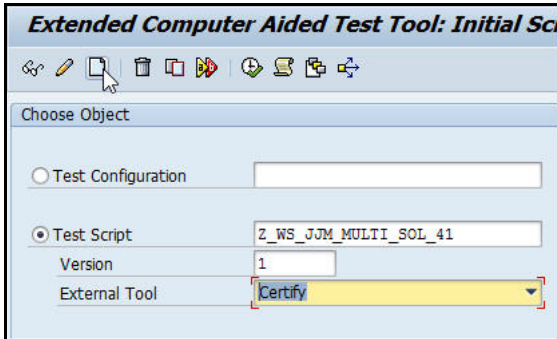


- 2 Click the **Script** button to open Certify.
The User Entries for External Tool dialog box opens.
- 3 Enter Certify credentials.
- 4 Click **Continue**.
A New Script Version message states that Certify detects a new version of the script, and a new version of the process will be created in Certify with the new version suffixed to the script name.
- 5 Click **OK**.
The Select Process Folder dialog box opens in Certify.
- 6 Select the folder where the new process needs to be created.
- 7 Click **OK**.
The Process Editor opens with the newly created process with the version suffixed to the name.
- 8 Add the required steps to the process.
- 9 After you have completed your process, from the Process Editor menu, select **SAP > Save and Return to SAP** from the Process Editor menu.
- 10 Promote the process/script in Certify. For more information on how to promote a script, see ["To promote the Certify process with the script:" on page 30](#).

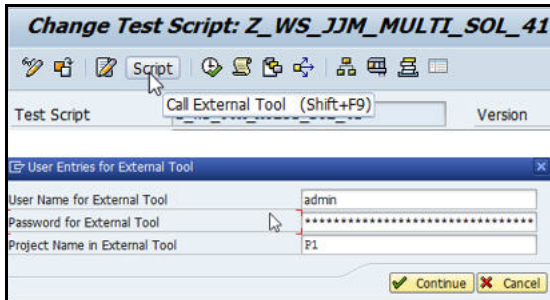
You can also use this process to create another version of the maintenance script by using a specific previous version. For example, you can make a copy of the first version to create a third version.

► **To migrate the existing Certify processes to Solution Manager:**

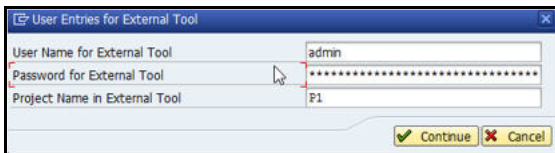
- 1 Create a new process in Certify and add a version suffix.
Example: Z_WS_JJM_MULTI_S OL_MIGRATE_001
- 2 From Solution Manager, type the transaction code `secatt` in the Command field of the SAP toolbar.
- 3 Press **<Enter>**.



- 4 Create a corresponding script in Solution Manager without the version suffix and save the script.
- 5 Click on the **Script** button to open Certify.



The User Entries for External Tool dialog box opens.



- 6 Enter your Certify credentials.
- 7 Click **Continue**.

The Select Process Folder dialog box opens in Certify. All processes that have been already linked to Solution Manager are highlighted in blue.

- 8 Select the process and click **OK**.

A message appears stating that the process is not linked and asks if you want to confirm that the selected process should be linked to the Solution Manager script.

- 9** Click **Yes** to link the selected process.
The Process Editor opens the existing process.
- 10** Add the required steps to the process.
- 11** After you have completed your process, select **SAP > Save and Return to SAP** from the Process Editor menu
- 12** Promote the process/script in Certify. For more information, see ["To promote the Certify process with the script:" on page 30.](#)
- 13** Repeat this process for Certify processes that are not linked to the Solution Manager.

Appendix A Troubleshooting


This appendix provides guidance on how to troubleshoot your integration between Worksoft Certify and SAP Solution Manager.

Verifying ECATT_ET_USR User is Not Locked

The ABAP code in Solution Manager uses a well-known user name and password. The well-known user name is **ecatt_et_usr**. User names are generally not case sensitive, so `ecatt_et_usr` and `ECATT_ET_USR` are treated the same.

This user name and password is sent from Solution Manager to Certify where Certify uses them to make Remote Functional Calls (RFC) back into Solution Manager. In order for calls to work, the user name `ECATT_ET_USR` must not be locked. If this user name is locked, you will need to unlock it.

► **To verify ECATT_ET_USR is not locked:**

- 1 Log on to your Solution Manager.
The SAP Easy Access Solution Manager screen appears.
- 2 Type the transaction code `su01` in the Command field.
- 3 Press **<Enter>**.
The User Maintenance screen appears.
- 4 Click the **Lock/Unlock**  button.
If the user is locked, a message appears stating it is locked.
- 5 Click the **Unlock** button to unlock the user.
The `ECATT_ET_USR` is unlocked.
- 6 Save your changes to this user.

Troubleshooting Solution Manager Passwords

To prevent password problems, do not change the password for the `ecatt_et_usr` user in Solution Manager. If you need to change the password, it is best that you delete the `ecatt_et_usr` user and recreate the `ecatt_et_usr` again.

If you are still having problems, add an entry to the Certify configuration file to override the values of the Solution Manager user name and password as a workaround.

► **To add an entry to the Certify configuration file:**

- 1 Before you enable detailed logging, you must shut down Certify and all SAP GUI sessions.
- 2 Use the Windows Task Manager to verify that the **wsecattwrapper.exe** process is not running. If this process is running, turn it off.
- 3 Locate the Certify configuration file that is in the following directory:

```
C:\Program Files (x86)\Worksoft\Certify\Client\Worksoft.Certify.exe.config
```

- 4 Open the **Worksoft.Certify.exe.config** file in Notepad or another text editor.
- 5 In the configuration file, scroll down to the **<appSettings>** section.
- 6 Just beneath the `<appSettings>` tag, copy and paste the following line into the configuration file:

```
<add key="EcattDebugRFCUser" value="ecatt_et_usr" />
<add key="EcattDebugRFCPassword" value="correct password" />
```

Example:

```
<appSettings>
    <add key="EcattDebugRFCUser" value="ecatt_et_usr" />
    <add key="EcattDebugRFCPassword" value="correct password" />
```

- 7 Save the updated configuration file.

Certify will now override the values for the user name and password provided by Solution Manager, and it will use the values from the configuration file.

Appendix B Setting Explicit Permissions for Clients

This Appendix provides guidance on setting permissions for new clients.

New Entries: Details of Added Entries

Client

City Last Changed By

Logical system Date

Std currency

Client role

Changes and Transports for Client-Specific Objects

- Changes without automatic recording
- Automatic recording of changes
- No changes allowed
- Changes w/o automatic recording, no transports allowed

Cross-Client Object Changes

Changes to Repository and cross-client Customizing allowed

Protection: Client Copier and Comparison Tool

Protection level 0: No restriction

CATT and eCATT Restrictions

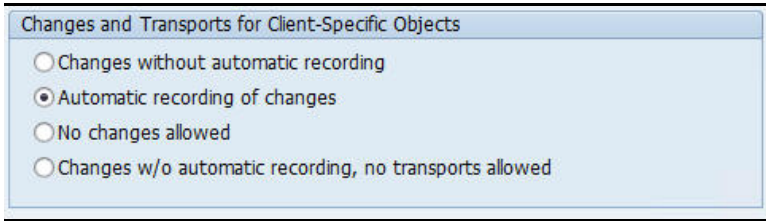
eCATT and CATT Not Allowed

Restrictions

- Locked due to client copy
- Protection against SAP upgrade

If you do not use the parameters listed in the procedure ["To create explicit permission for every client that will test via eCATT:"](#) on page 9 in [Chapter Chapter 2, "Configuring SAP Solution Manager,"](#) on page 7, then test creation, test execution, and TBOM generation may be affected. This Appendix lists if the parameter selection will impact any of these actions.

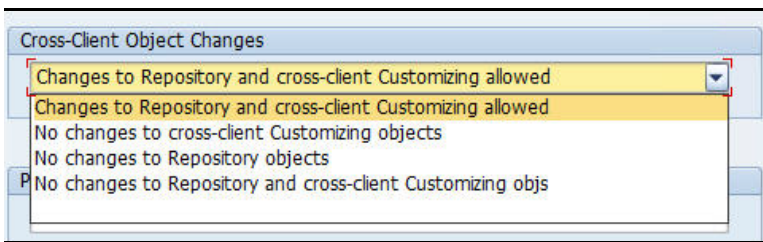
Changes and Transports for Client-Specific Objects Options



If you select any other option than the one shown above, listed below is what will happen:

Action	Option/Impact
Test Creation/Revision	All options - No impact
Test Execution	All options - No impact
TBOM Generation	All options - No impact

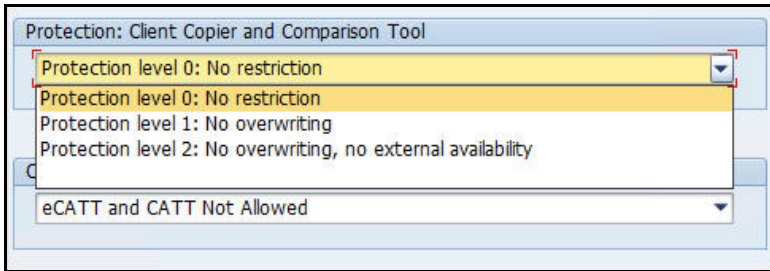
Cross-Client Object Changes



If you select any other option than the one shown above, listed below is what will happen:

Action	Option/Impact
Test Creation/Revision	<p>No changes to cross-client customizing objects - No impact</p> <p>No changes to repository objects - Yes, unable to create tests</p> <p>No changes to repository and cross-client customizing objs - Yes, unable to create tests</p>
Test Execution	All options - No impact
TBOM Generation	All options - No impact

Protection: Client Copier and Comparison Tool



If you select any other option than the one shown above, listed below is what will happen:

Action	Option/Impact
Test Creation/Revision	All options - No impact
Test Execution	All options - No impact
TBOM Generation	All options - No impact

CATT and eCATT Restrictions



If you select any other option than the one shown above, listed below is what will happen:

Action	Option/Impact
Test Creation/Revision	All options - No impact
Test Execution	All options - No impact
TBOM Generation	All options - No impact