

# Installation Guide

**Worksoft Certify<sup>®</sup> Integration with  
SAP<sup>®</sup> Solution Manager**

# Worksoft Certify Integration with SAP Solution Manager Installation Guide

## Version 7.2 SP14

© Copyright 2023 by Worksoft, Inc. All rights reserved.

Worksoft is a business name of Worksoft, Inc. Information in this document is subject to change and revision without notice. The software described herein may only be used and copied as outlined in the Software License Agreement. No part of this manual may be reproduced by any means, electronic or mechanical, for any purpose other than the purchaser's personal use, without prior written permission from Worksoft.

Worksoft provides this documentation "as is" without warranty of any kind, either express or implied. Worksoft may revise information in this document without notice and does not represent a commitment on the part of Worksoft, Inc.

Worksoft, Inc. may have patents or pending patent applications covering subject matter in this document. The furnishing of this document does not give you any license to these patents except as expressly provided in any written license agreement from Worksoft, Inc.

### Patent

Worksoft Certify®

U.S. Patent No. 7,600,220

### Trademarks

Worksoft Certify® is a registered trademark of Worksoft, Inc.

All other trademarks and trade names mentioned in this guide are the property of their respective owners.

### Third-Party Copyrights

This product includes software developed and copyrighted by the following persons or companies:

Data Dynamics, Ltd., ActiveReports

Microsoft® Enterprise Library

Infragistics® NetAdvantage®

Apache Logging Services log4net

Antlr ANTLR

The above copyright holders disclaim all responsibility or liability with respect to its usage or its effect upon hardware or computer systems.



# Table of Contents

<b>Chapter 1 Overview</b>	<b>4</b>
Understanding Worksoft Certify and SAP Solution Manager Integration	5
Test Results	5
Certify and Solution Manager Link	5
<b>Chapter 2 Configuring SAP Solution Manager</b>	<b>7</b>
Overview	8
Setting Up SAP eCATT	8
Registering Certify as a Third-Party Test Tool	13
Creating a Number Range for External Log ID	15
Creating an eCATT Role and User Account	17
<b>Chapter 3 Configuring Worksoft Certify</b>	<b>20</b>
Creating a User Named ECATTUser in Certify	21
Configuring Global Settings for Solution Manager Integration	22
<b>Chapter 4 Bypassing Certify User Sign-in Prompt in Solution Manager</b>	<b>25</b>
Overview	26
Configuring Certify User Sign-in Prompt to Off	26
<b>Chapter 5 Configuring Multiple Solution Manager Integrations</b>	<b>29</b>
Overview	30
Setting Up Multiple Solution Manager Integrations	30
<b>Appendix A Troubleshooting</b>	<b>36</b>
Verifying ECATT_ET_USR User is Not Locked	36
Troubleshooting Solution Manager Passwords	37
<b>Appendix B Setting Explicit Permissions for Clients</b>	<b>38</b>
Changes and Transports for Client-Specific Objects Options	39
Cross-Client Object Changes	39
Protection: Client Copier and Comparison Tool	40
CATT and eCATT Restrictions	40



# Chapter 1 Overview

---

## In This Chapter

Understanding Worksoft Certify and SAP Solution Manager Integration ..... 5

---

---

## Understanding Worksoft Certify and SAP Solution Manager Integration

---

By integrating Worksoft Certify® with SAP® Solution Manager, you can create, edit, execute, and view the results of the Certify processes from within SAP Solution Manager.

You will be able to leverage SAP and Worksoft Best Practices for the following:

- ◆ Test organization
- ◆ Test execution
- ◆ Test package status analysis

Solution Manager contains test assets and links to the business processes to be validated, and Certify contains the automated and manual test processes, as well as the associated test assets to enable test automation.

As your test processes are defined and documented in Certify, you may want to link them back to SAP Solution Manager in order to have:

- ◆ An original inventory of business processes
- ◆ A central point of project governance

### Test Results

Also, if you integrate Solution Manager with Certify, test results are returned to both Certify and Solution Manager. You can store all results in a single repository in Solution Manager and ensure that the business requirements have been met by viewing your test packages and Test Workbench.

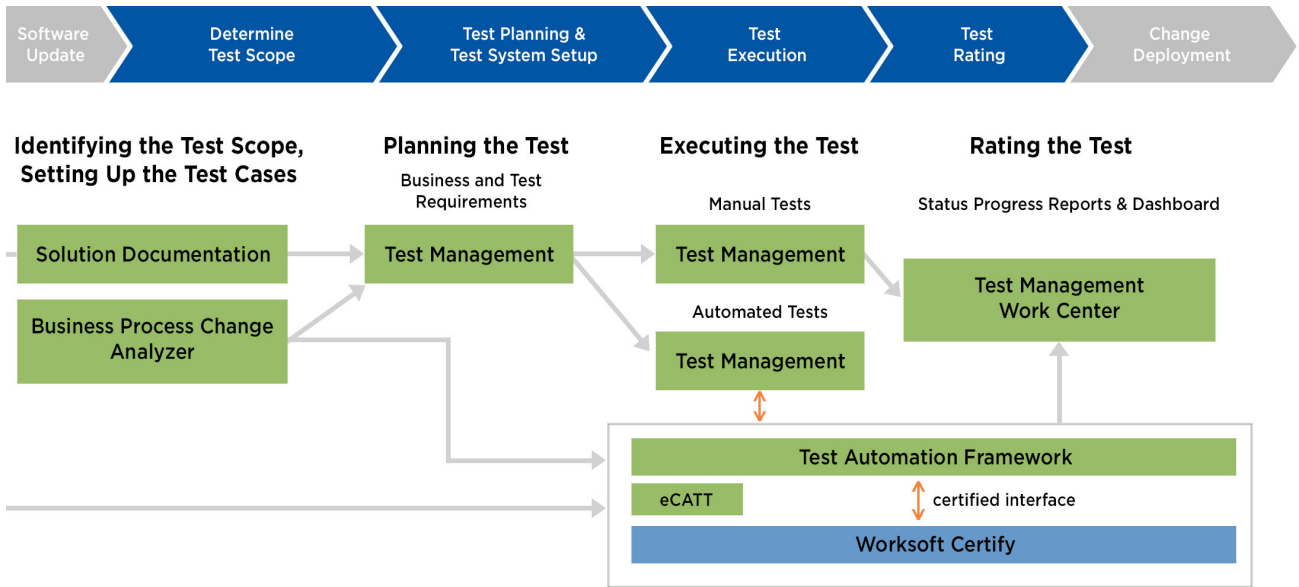
The Test Workbench provides a high-level view of the automation results in Solution Manager. You can check at any time the progress of individual test cases or an entire test package with the Test Workbench.

### Certify and Solution Manager Link

Certify test processes are linked to the business processes in Solution Manager. From Solution Manager, you can:

- ◆ Create new Certify processes
- ◆ Edit existing Certify processes
- ◆ Execute Certify processes by invoking Certify for execution
- ◆ Review test results

Test configurations are defined in Solution Manager, and these configurations point to an internal test script and the associated Certify process.



To integrate Certify with SAP Solution Manager, you must have a basic understanding of Solution Manager, and Solution Manager business processes must have been created.





## Chapter 2      Configuring SAP Solution Manager

---

### In This Chapter

Overview .....	8
Setting Up SAP eCATT .....	8
Registering Certify as a Third-Party Test Tool .....	13
Creating a Number Range for External Log ID .....	15
Creating an eCATT Role and User Account .....	17

---

---

## Overview

---

To integrate SAP Solution Manager with Worksoft Certify, you must use SAP extended Computer Aided Test Tool (eCATT). SAP eCATT is SAP's document interface for communication between SAP and testing applications. Your eCATT must be set up correctly to implement this integration with Certify.

This chapter will guide you on how to make the following changes to your SAP Server:

- ◆ Set up your SAP extended Computer Aided Test Tool (eCATT)
- ◆ Register Certify as a test tool
- ◆ Create a number range for an external log ID
- ◆ Create a new SAP user to communicate between SAP eCATT and Certify

Before you begin, you need to:

- ◆ Install Certify and the SAP GUI client on the client machine where you are integrating SAP Solution Manager with Certify.
- ◆ If you access your SAP Server through an SAP gateway, you must create a registry key on the client that defines your default SAP GUI connection.

---

## Setting Up SAP eCATT

---

The SAP Central Test Management System uses an eCATT test script to test all system components. The test system and Central Test Management System communicate through the remote function call (RFC) interface. Even for an automated test run, the RFC requires a user interaction because they must enter the client name, user name, and password for every system called by RFC.

The procedure recommended by SAP is to set up a trusted RFC connection that requires neither a manual logon to the target server nor the logon data be stored anywhere. An exact instruction for setting up a trusted RFC connection can be found in SAP Note 128447.

When you set up your SAP eCATT, you must do the following tasks:

- ◆ Verify the SAP support package level.
- ◆ Create explicit permissions for every client that will test via eCATT.
- ◆ Enable scripting with transaction rz11.
- ◆ Remove existing parameter pre-assignments.

► **To verify SAP support package level:**


All systems must fulfill specific minimum requirements regarding the installed support package levels.

You need to verify that your system meets the required support package level. For more information about required release and support levels, see SAP Note 519858.



► **To create explicit permission for every client that will test via eCATT:**

You must set explicit permission for every client that runs an automated test through eCATT.

- 1 From Solution Manager, enter transaction code scc4 in the Command field of the SAP toolbar.
- 2 Press **<Enter>**.  
The Display View Contents: Overview screen opens.
- 3 Click the **Display > Change**  button.  
The New Entries button appears.
- 4 Click the **New Entries** button.  
The New Entries: Details of Added Entries screen opens.

- 5 Enter the client information.
- 6 In the Changes and Transports for Client-Specific Objects section, select the **Automatic Recording of Changes** option.
- 7 In the Cross-Client Object Changes field, select the **Changes Allowed to Repository and Cross-Client Customizing** from the drop-down list.

- 8 In the CATT and eCATT Restrictions field, select one of the following options.

Option	Description
<b>eCATT and CATT not Allowed</b>	Prevents test scripts from being started in the client.
<b>eCATT and CATT Allowed</b>	Enables you to implement eCATT and CATT without restrictions. Using inline ABAP and function modules, any code can be run on the target system.
<b>eCATT and CATT Only Allowed for 'Trusted RFC'</b>	Automated test cases can be started only if the target system has been addressed through a trusted RFC connection. In this case, the full range of functions can be implemented for tests on this client.
<b>eCATT Allowed, but FUN/ABAP and CATT not Allowed</b>	Only transactions can be executed in the target client. They must be addressed through eCATT.
<b>eCATT Allowed, but FUN/ABAP and CATT only for 'Trusted RFC'</b>	This protection level allows calling function modules and executing inline ABAP provided that the connection to the target system is established through a trusted RFC.

- 9 Click **Save**.
- 10 Repeat the process to create all of your clients.

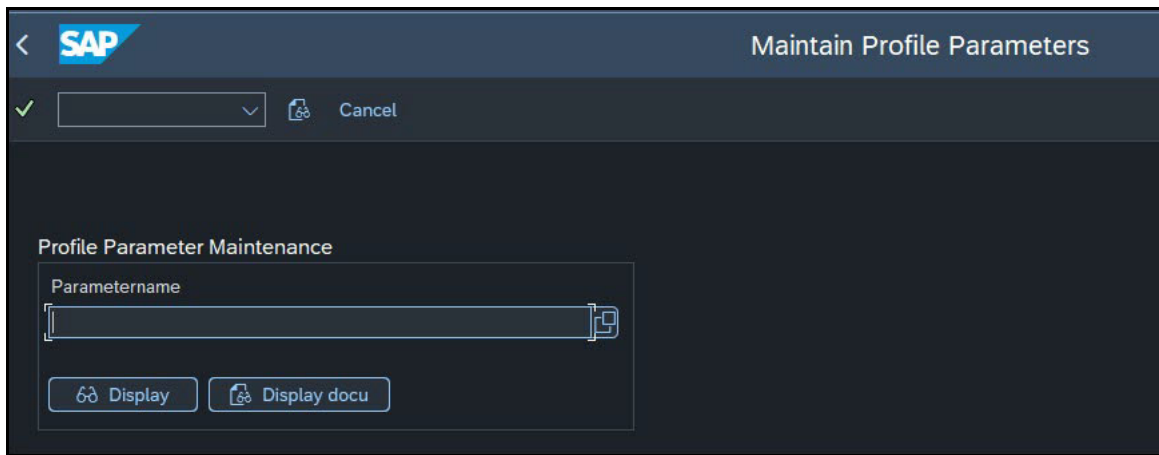


**Note:** For further information on how these permission settings affect test creation, test execution, or Technical Bill of Materials (TBOM) generation, see [Appendix B "Setting Explicit Permissions for Clients."](#)

► **To enable scripting with transaction rz11:**

- 1 From the SAP GUI interface, enter `rz11` in the Command field of the SAP toolbar.
- 2 Press **<Enter>**.

The Maintain Profile Parameters screen opens.



- 3 In the Parameter Name field, enter `sapgui/user_scripting`.

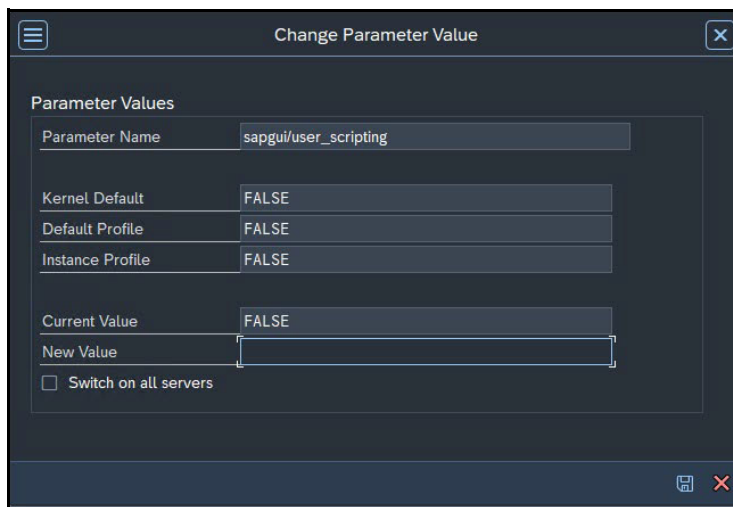
- Click **Display**.

The Display Profile Parameter Details screen opens.



- Click the **Change Value** button.

The Change Parameter Value screen opens.



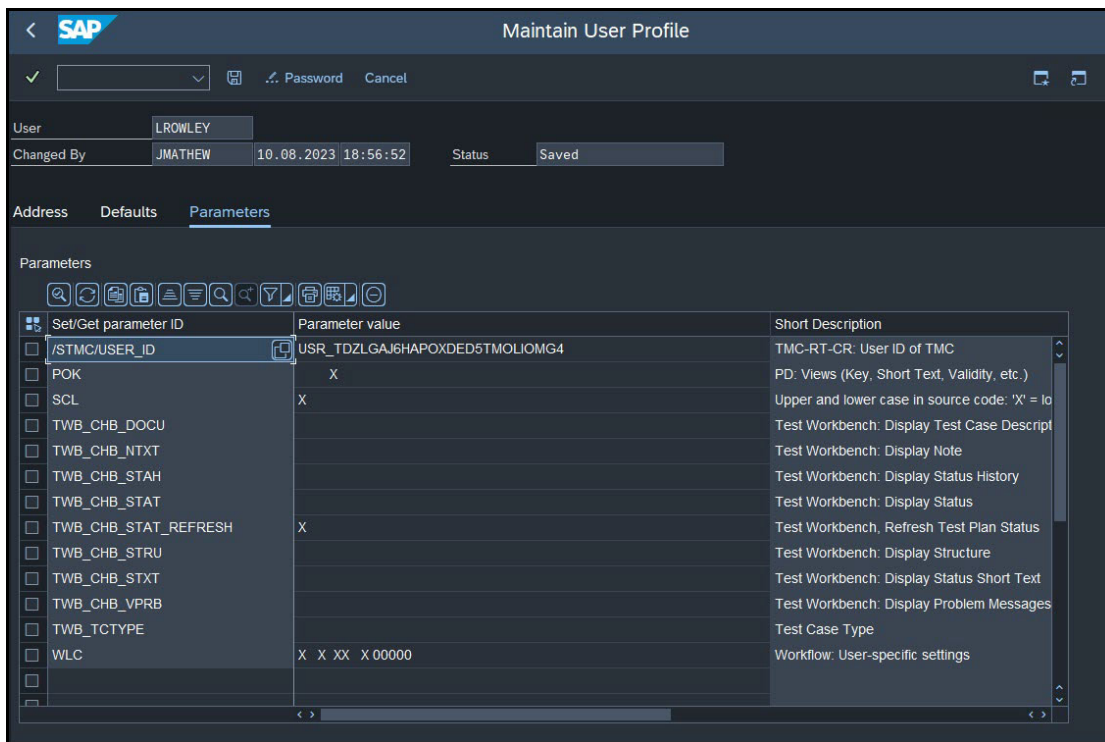
- In the New Value field, enter **TRUE**.
- Click the **Save** button.
- Repeat **Step 3** through **Step 7** for the following parameters:

Parameter	Value
sapgui/user_scripting_disable_recording	FALSE
sapgui/user_scripting_force_notification	FALSE
sapgui/user_scripting_set_readonly	FALSE

► **To remove existing parameter pre-assignments:**

You need to remove the existing parameter pre-assignments. If the pre-assignments are changed between recording and processing the script, the changed assignment can produce errors. Also, if the script is processed by a different SAP user, errors can occur.

- 1 From Solution Manager, enter the transaction code **su3** in the Command field of the SAP toolbar.
- 2 Press **<Enter>**.  
The Maintain User Profile screen opens.
- 3 Click the **Parameters** tab.  
The Parameters tab opens.



- 4 Remove any pre-defined parameter values.
- 5 Click the **Save** button to save the changes.



**Note:** To ensure that no user-specific parameters are predefined, create a new user and use it exclusively for recording. If you need to document the creator of the automatic test case for verification management, use **Transaction SU3** to delete the parameter pre-assignments for your user before recording.

## Registering Certify as a Third-Party Test Tool

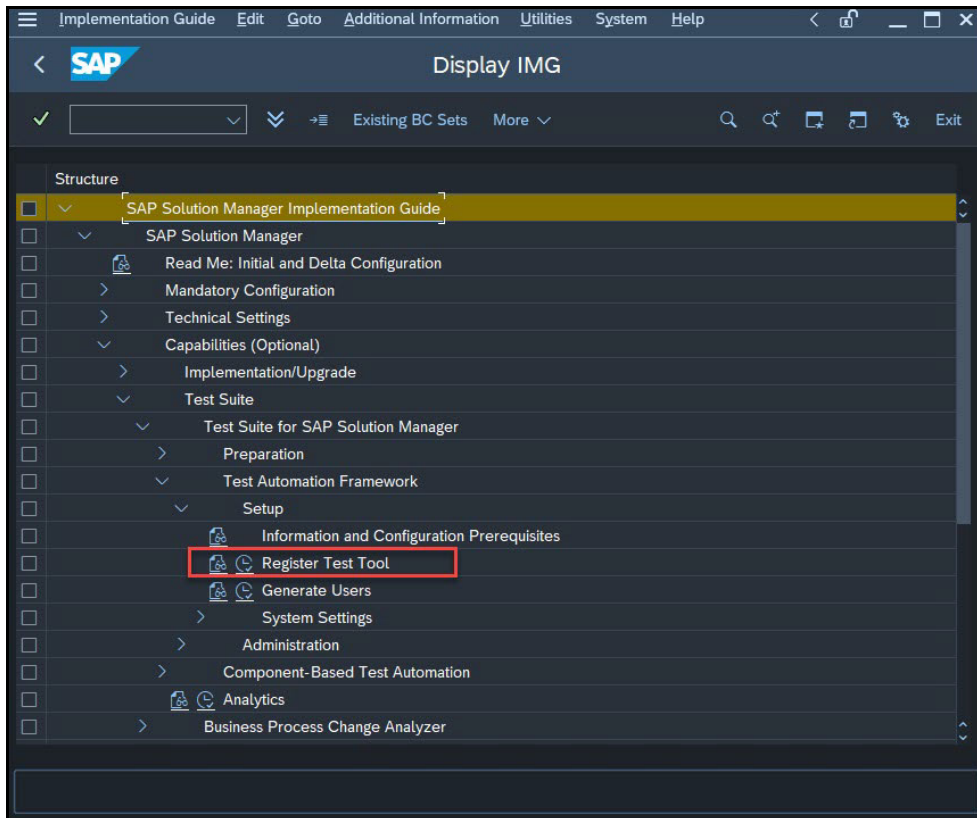
In order to enable integration with Solution Manager, you must register Worksoft Certify as a third-party test tool. To register Certify as a test tool, you need to first navigate to the Solution Manager registration tool.

► **To navigate to the Solution Manager registration tool:**

- 1 From the SAP GUI interface, enter the transaction code `SPRO` in the Command field of the SAP toolbar. The My Customizing Worklist screen opens.

- 2 Click the **SAP Reference IMG** button.

The Display IMG screen opens.



- 3 Navigate to the Register Test Tool: **SAP Solution Manager > Capabilities (Optional) > Test Suite > Test Suite for SAP Solution Manager > Test Automation Framework > Setup > Register Test Tool.**

- 4 Click the **Execute**  button next to Register Test Tool.

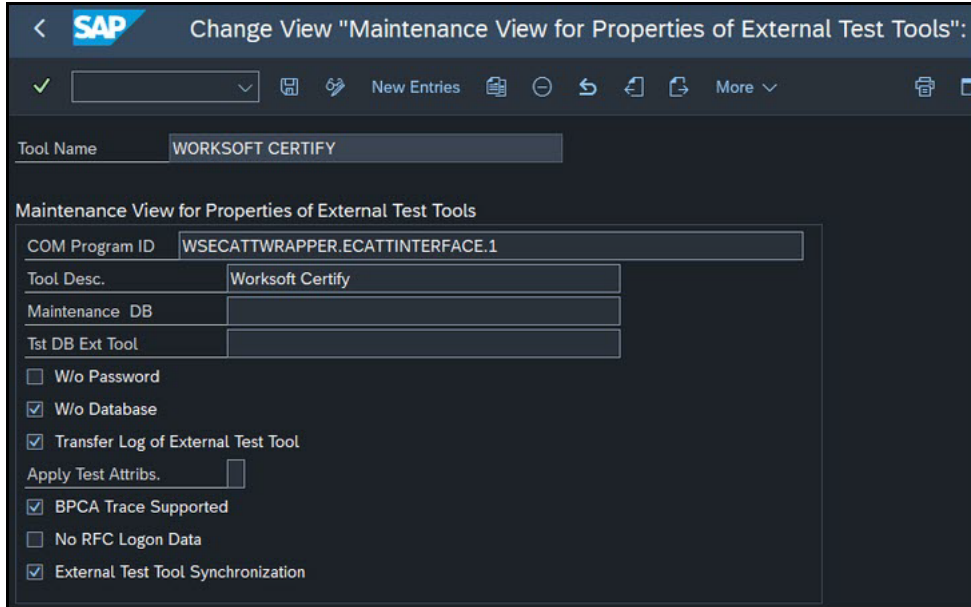
The Change View “Maintenance View for Properties of External Test Tools” screen opens.

Now that the registration tool is launched, you are ready to register Certify as a third-party test tool.

► **To register Worksoft Certify as a third-party test tool:**

- 1 From the Change View “Maintenance View for Properties of External Test Tools” screen, click the **New Entries** button.

The New Entries screen opens.



- 2 Enter or select the following parameter values:

Parameter	Value
Tool Name	<b>Worksoft Certify</b>
COM Program ID	<b>WSECATTWRAPPER.ECATTINTERFACE.1</b> This value must be in all uppercase letters.
Tool Description	<b>Worksoft Certify</b>
Maintain DB	<b>NONE</b>
Test DB External Tool	<b>NONE</b>
W/O Password	Unchecked
W/O Database	Checked
Transfer Log	Checked
BPCA Trace Supported	Checked
No RFC Logon Data	Unchecked
External Test Tool Synchronization	Checked

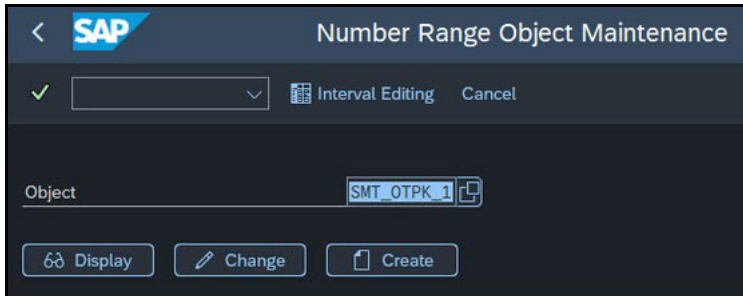
- 3 Click the **Save** button.
- 4 Worksoft Certify now appears in the Change View “Maintenance View for Properties of External Test Tools” screen.

## Creating a Number Range for External Log ID

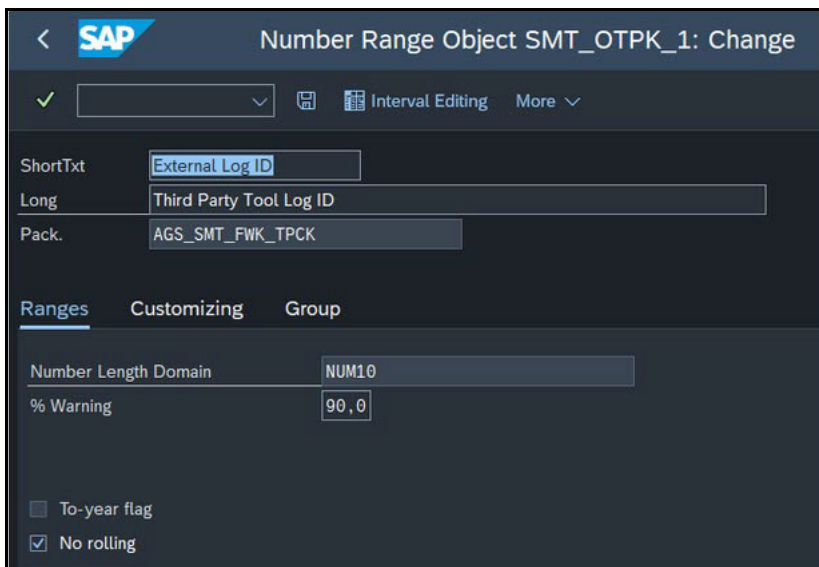
In Solution Manager, you need to create a number range for an external log ID.

► **To create a number range for an external log ID:**

- 1 From the SAP GUI interface, enter the transaction code **SNRO** in the Command field of the SAP toolbar. The Number Range Object Maintenance screen opens.



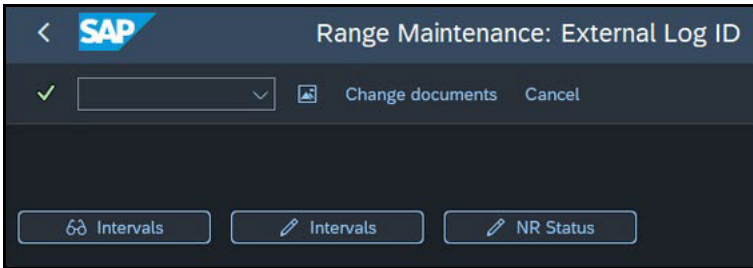
- 2 In the Object field, enter **SMT\_OTPK\_1**.
- 3 Click **Change**.  
The Number Range Object Change screen opens.



- 4 Click **Interval Editing**.

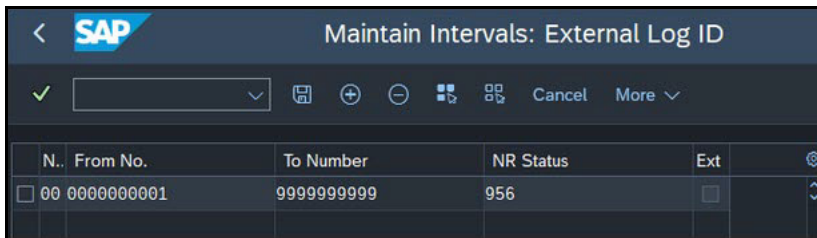


The Range Maintenance: External Log ID screen opens.



**5** Click **Change Intervals**.

The External Log ID Number Range grid opens.



**6** In the From Number field, enter 0000000001.

**7** In the To Number field, enter 9999999999.

**8** Click **Save** to save the external log ID range.

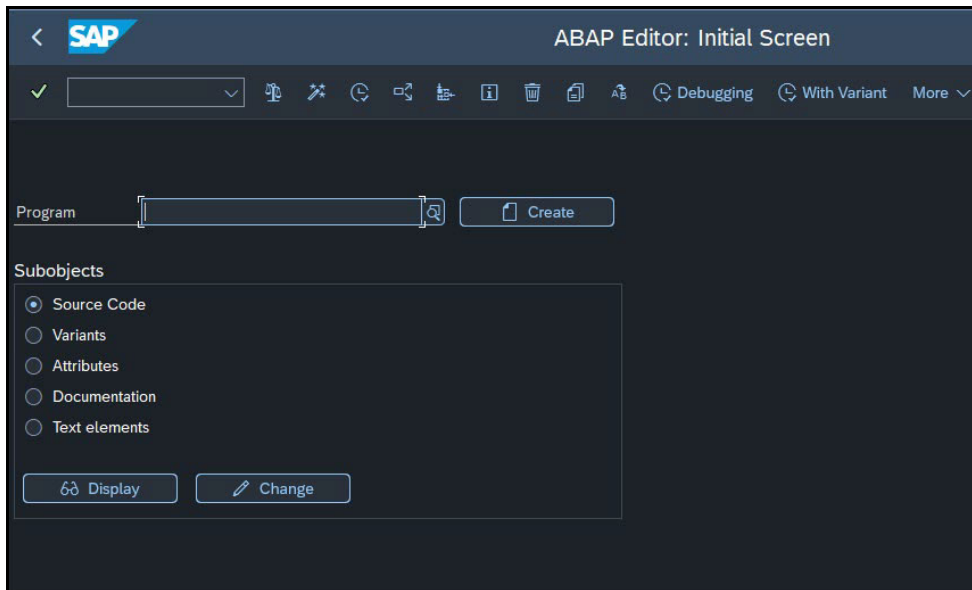
## Creating an eCATT Role and User Account


To take advantage of eCATT integration using external tools, a role and user account must be generated by your system administrator.

### ► To create an eCATT role:

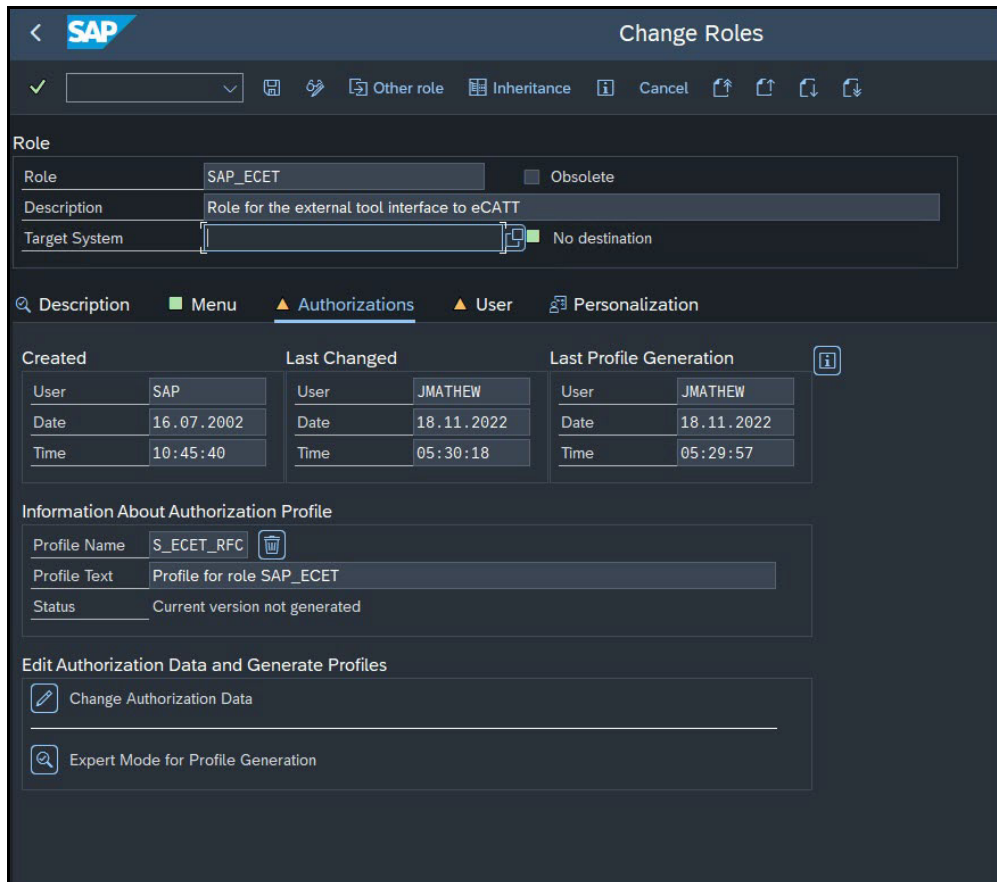
- 1 From the SAP GUI interface, enter the transaction code **SE38** in the Command field of the SAP toolbar.
- 2 Press **<Enter>**.

The ABAP Editor screen opens.



- 3 In the Program field, enter **ECATT\_GENERATE\_ET\_USER**.
- 4 Click the **Execute** button or press **<F8>**.
- 5 After running the program, enter the transaction code **PF30** in the Command field of the SAP toolbar. The Role Maintenance screen opens.
- 6 In the Role field, enter **SAP\_ECET**.
- 7 Click the **Change**  button.

The Change Role screen opens.



- 8** Click the **Authorizations** tab.

The Save Role messages opens.

- 9** Click **Yes** to save the role.

The Authorizations tab opens.

- 10** Click the **Change Authorization Data**  button.

The Change Role: Authorizations screen opens with a hierarchical tree structure displaying the contents of the role.

- 11** Place your cursor over the top node **SAP\_ECET** in the tree display.

- 12** From the menu, select **Authorizations > Generate** or click the **Generate**  button from the toolbar.

The SAP\_ECET role is generated.

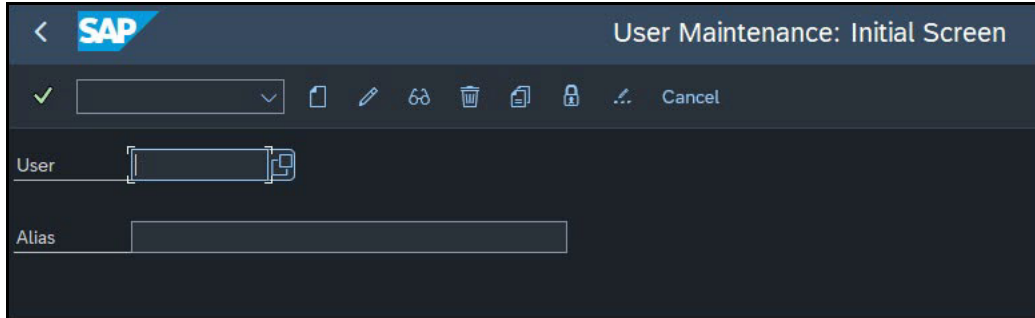
- 13** In the toolbar, click the **Back**  button to return to the Role Maintenance screen.


- 14** Click the **Save** button to save the role.

► **To create an eCatt user account:**

- 1 Enter the transaction code `sū01` in the Command field of the SAP toolbar.
- 2 Press **<Enter>**.

The User Maintenance screen opens.



- 3 In the User field, enter `ECATT_ET_USR`.
- 4 Click the **Change Password**  button.  
The Change Password dialog opens.
- 5 In the New Password and Repeat Password fields, enter a secure password. Passwords are limited to 32 characters.
- 6 Press **<Enter>**.
- 7 Sign off of SAP.

Your new user is now enabled to communicate between SAP eCATT and Certify.

Now that you have completed configuring Solution Manager, you need to configure Certify.



## Chapter 3      Configuring Worksoft Certify

---

### In This Chapter

Creating a User Named ECATTUser in Certify.....	21
Configuring Global Settings for Solution Manager Integration.....	22

---

---

## Creating a User Named ECATTUser in Certify

---

After you have configured your SAP Server, you will now configure Certify. In Certify, you need to create a Certify user with the name of **ECATTUser**. This new user will help you connect to SAP Solution Manager.

► **To create ECATTUser in Certify:**

- 1** In the Certify Navigation pane, click **Users & Groups**.  
The Users & Groups window opens.
- 2** In the Users Summary pane, right-click in the pane and select **New User**.  
The New User dialog opens.
- 3** In the First Name and Last Name fields, enter the first and last name of the user.  
The first and last names can have a maximum of 100 characters. Special characters and numbers are allowed in names.
- 4** In the Username text field, enter **ECATTUser**. This name is case-sensitive.
- 5** In the New Password and Verify Password text fields, enter a password for the user.  
Passwords have a minimum of 6 characters and a maximum of 16 characters. Special characters are allowed.
- 6** Select the **Password Never Expires** option.
- 7** Click **OK** to save the new user.

## Configuring Global Settings for Solution Manager Integration

The Global Configuration Settings tool in Worksoft Certify allows you to edit your current configuration for all users in your organization. Some of the global settings affect Certify integration with SAP Solution Manager.

► **To configure global settings for Solution Manager integration:**

- 1 From the Certify menu, select **Configure > Certify > Certify Global**.  
The Global Configuration Settings tool opens.
- 2 Select values for the following parameters from the drop-down lists:

Option	Description
<p><b>SAP Process Lock Mode</b></p>	<p>Select one of the following values:</p> <ul style="list-style-type: none"> <li>• <b>True</b> – Lock assets and do not allow sharing of assets between tests.</li> <li>• <b>False</b> – Do not lock assets and allow assets to be shared. For example, allow a project variable to be used in two different tests linked to Solution Manager.</li> </ul> <p>Worksoft recommends the default value <b>False</b>.</p>
<p><b>SAP Process Serialize Mode</b></p>	<p>When a process and its related assets (e.g. variables, objects, child processes, layouts, etc.) are stored in the SAP Solution Manager, this option controls how much data is actually sent to the Solution Manager.</p> <p>Select one of the following values:</p> <ul style="list-style-type: none"> <li>• <b>Serialize_IDOnly</b> – Store only IDs.</li> <li>• <b>Serialize_FullyPortable</b> – Store all information for assets. This option has the longest process time.</li> <li>• <b>Serialize_ICL_Variable_RefOnly</b> – Store process and layout information in full form, and store ICL and variable information by ID only.</li> <li>• <b>Serialize_ICL_RefOnly</b> - Store process, layout, and variable information in full form, and store ICL information by ID only.</li> </ul> <p>Worksoft recommends the default value <code>Serialize_IDOnly</code>. If you change this value after you have selected the default value, you may have complications with integrating Certify with Solution Manager.</p>



Option	Description
<p><b>SAP Results Serialize Mode</b></p>	<p>When a result is stored in Solution Manager, this option controls how much data is sent to Solution Manager.</p> <p>Select one of the following values:</p> <ul style="list-style-type: none"> <li>• <b>Serialize_IDOnly</b> – Store only IDs.</li> <li>• <b>Serialize_FullyPortable</b> – Store all information for all assets as completely as possible. This option has the longest process time.</li> <li>• <b>Serialize_ICL_Variable_RefOnly</b> – Store process and layout information in full form, and store ICL and variable information by ID only.</li> <li>• <b>Serialize_ICL_RefOnly</b> - Store process, layout, and variable information in full form, and store ICL information by ID only.</li> </ul> <p>Worksoft recommends the default value <code>Serialize_IDOnly</code>. If you change this value after you have selected the default value, you may have complications with integrating Certify with Solution Manager.</p>
<p><b>Default Solman Project</b></p>	<p>As part of Solution Manager integration, Certify gets registered as a third-party test tool. This option lets you select whether you want to prompt the user for a user name and password.</p> <p>The <b>Default</b> value is the <code>IntegratedSAP</code> project. The user provides the project name. You can override the default project by entering the name of the project into this field. This value must be selected at the beginning of an implementation.</p> <p>If you select to prompt for a user name and password, then it is not possible to use Certify in a lights-out test because the prompt will appear.</p> <p>If you want to avoid the prompt and enable lights-out testing, then you must mark the Certify registration as not requiring a password.</p>
<p><b>Solman Result User</b></p>	<p>Select a user with permission to launch the Certify Result Viewer from the SAP Solution Manager. Use the value set in <code>SolmanResultUser</code> or the well-known user name <b>ECATTUser</b>.</p>
<p><b>Solman Test Package Result Sync User</b></p>	<p>When integrating Certify with SAP Solution Manager, you can save your SAP Remote Function Call (RFC) credentials. These credentials connect to Solution Manager during synchronized test packages execution from Certify to run a prerequisite check and sync execution status back to Solution Manager. Enter the RFC user name.</p>

Option	Description
<b>Solman Test Package Result Sync Password</b>	<p>When integrating Certify with SAP Solution Manager, you can save your SAP Remote Function Call (RFC) credentials. These credentials connect to Solution Manager during synchronized test packages execution from Certify to run a prerequisite check and sync execution status back to Solution Manager.</p> <p>Enter the RFC password.</p>
<b>Use Solman User in Certify</b>	<p>From the drop-down menu, select <b>True</b> to use the current Solution Manager user name to sign in to Certify. By setting the value to True, the user is authenticated when you launch Worksoft Certify, and you avoid being prompted for credentials.</p> <p>For more information on how to configure this option, see <a href="#">Chapter 4 "Bypassing Certify User Sign-in Prompt in Solution Manager"</a>.</p>

- 3 Click **OK** to save your global settings.



## **Chapter 4      Bypassing Certify User Sign-in Prompt in Solution Manager**

---

### **In This Chapter**

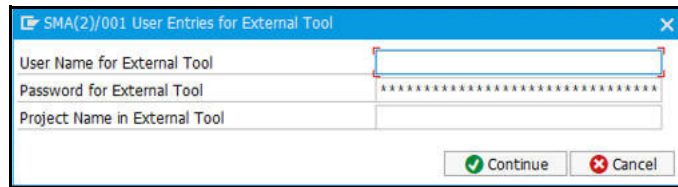
Overview .....	26
Configuring Certify User Sign-in Prompt to Off .....	26

---

## Overview

---

When Worksoft Certify is launched from SAP Solution Manager, you need to enter your Certify credentials in order to access the Process Editor.



The screenshot shows a dialog box titled "SMA(2)/001 User Entries for External Tool". It has three input fields: "User Name for External Tool", "Password for External Tool" (which is masked with asterisks), and "Project Name in External Tool". At the bottom right, there are two buttons: "Continue" with a green checkmark icon and "Cancel" with a red X icon.

---

## Configuring Certify User Sign-in Prompt to Off

---

To turn the authentication prompt off, you must make changes to Solution Manager settings and Certify settings. Complete the following tasks to disable the sign-in prompt:

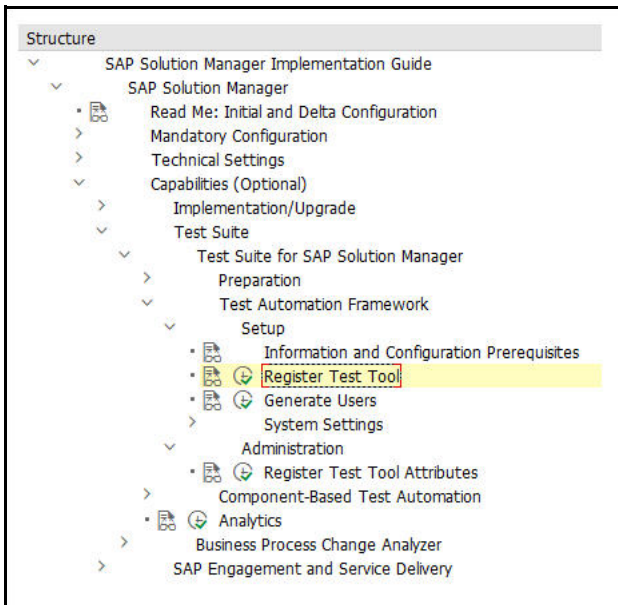
- ◆ Turn off prompt for user and project in Solution Manager
- ◆ Configure the **Use Solman User in Certify** option in Certify
- ◆ Set a Certify project
- ◆ Set user permissions in Certify

▶ **To turn off prompt for user and project in Solution Manager:**

- 1 Implement **SAP Note 2715012** to support this feature.
- 2 Navigate to the Solution Manager registration tool.
- 3 From the SAP GUI interface, enter the transaction code **SPRO** in the Command field of the SAP toolbar.  
The Customizing: Execute Project screen opens.
- 4 Click the **SAP Reference IMG** button.  
The Display IMG screen opens.

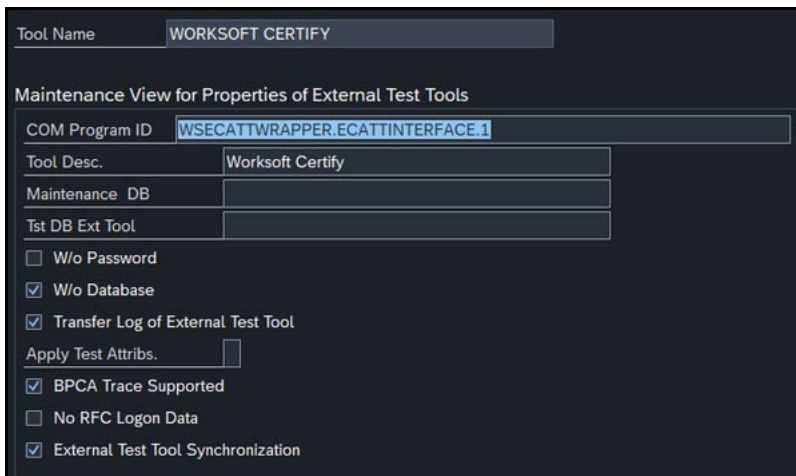
5 Navigate to the Register Test Tool:

**SAP Solution Manager > Capabilities (Optional) > Test Suite > Test Suite for SAP Solution Manager > Test Automation Framework > Setup > Register Test Tool**



6 Click the **Execute** button to open the registration tool.

7 From the Maintenance View For Properties of External Test Tools dialog, select the **W/o Password** option to turn off the prompt for Certify credentials.



8 Save your changes.

Now you need to configure Certify.

► **To configure the Use Solman User in Certify option in Certify:**

- 1** From the Certify menu, select **Configure > Certify > Certify Global**.  
The Global Configuration Settings dialog opens.
- 2** Scroll down to the **Use Solman User in Certify** option.
- 3** From the drop-down menu, select **True** to use the current Solution Manager user name to sign in to Certify.  
  
By setting it to True, the user is authenticated when you launch Worksoft Certify. Certify maps the current Solution Manager user name to an existing Certify user with the same login name for authorization.  
  
Ensure that a Certify user is created with the same login name with the required permissions.

► **To set a Certify project:**

When Certify is launched from Solution Manager for a new test configuration, a default project can be set using a user variable. If this is not defined, Certify will prompt you to select a project.

To avoid being prompted, create a new user variable named DEFAULT\_SOLMAN\_PROJECT. You can create the new user variable in two different ways:

- ◆ From the Extensions window  
For information on how to create user variables in the Extensions window, go to the [Worksoft Help Portal](#). Set the default value to DEFAULT\_SOLMAN\_PROJECT.
- ◆ From the Certify menu **Tools > Set User Variables**  
To set a specific project for individual users, enter a value for the user variable DEFAULT\_SOLMAN\_PROJECT for each user.

► **To set Certify user permissions:**

- 1** Verify that a Certify user exists for each of the Solution Manager users. Certify maps the Solution Manager user name to the Certify login name.
- 2** Grant the required permissions to the mapped users in Certify. Permissions can be set on a user, group, project, or folder level. For more information, see the [Worksoft Help Portal](#).
- 3** Verify that the Certify user is active, and it has not expired or disabled.

You have now completed the configuration.



# Chapter 5      **Configuring Multiple Solution Manager Integrations**

---

## **In This Chapter**

Overview .....	30
Setting Up Multiple Solution Manager Integrations .....	30



---

## Overview

---

While integrating with Certify, you can manage multiple SAP Solution Manager instances and maintain the three different environments—development, quality assurance testing, and production.

You will need to complete the following tasks:

- ◆ Configure the **Change Multiple Solman Configuration** option in Certify
- ◆ Create a new script in Solution Manager
- ◆ Promote a process/script in Certify
- ◆ Create new versions of the script in Solution Manager for maintenance
- ◆ Migrate existing Certify processes to Solution Manager

---

## Setting Up Multiple Solution Manager Integrations

---

To start your configuration, you need to create the following three root folders in the Certify Processes window:

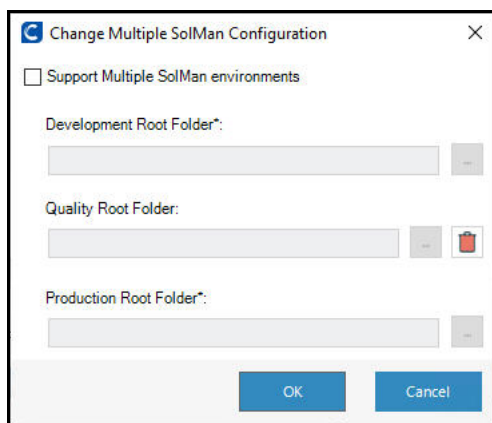
- ◆ Development
- ◆ Quality
- ◆ Production

For more information on how to create process folders, see the [Worksoft Help Portal](#). After you have created these folders, you must configure the **Change Multiple Solman Configuration** option in Certify.

► **To configure the Change Multiple Solman Configuration option in Certify:**

- 1 From the Certify menu, select **Configure > Integrations > Solution Manager**.

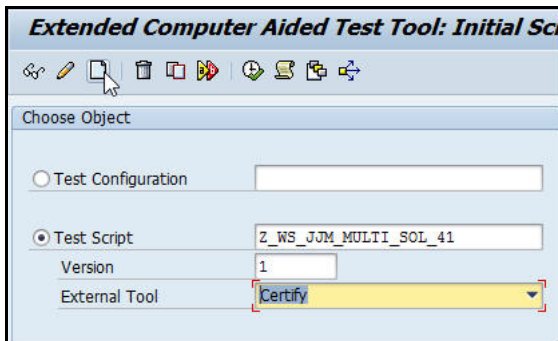
The Change Multiple Solman Configuration dialog opens.



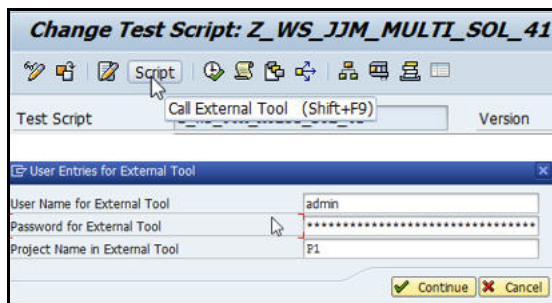
- 2 Select the **Support Multiple Solman Environments** option.
- 3 In the three folder fields, use the Browse button to select the root folders you created in the Processes window.
- 4 Click **OK** to complete the configuration.  
Now open Solution Manager to create a new script.

► **To create a new script in Solution Manager:**

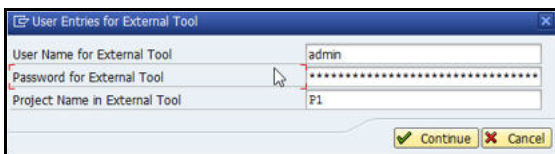
- 1 From Solution Manager, enter the transaction code `secatt` in the Command field of the SAP toolbar.
- 2 Press **<Enter>**.



- 3 Create a new script and save it.
- 4 Click on the **Script** button to open Certify.

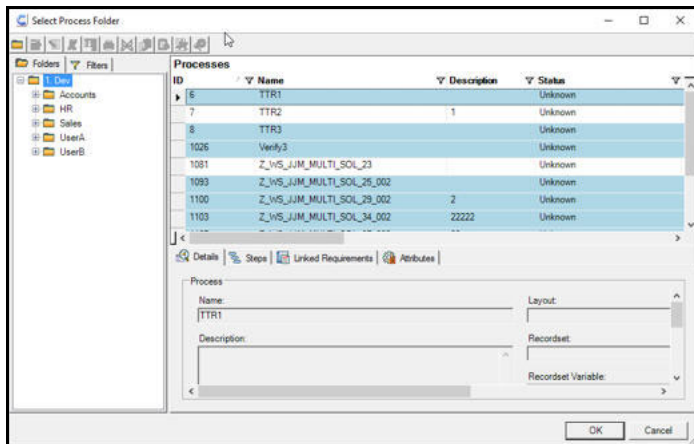


The User Entries for External Tool dialog opens.



- 5 Enter your Certify credentials.
- 6 Click **Continue**.

The Select Process Folder dialog opens in Certify.



7 Select the folder where the new process needs to be created.

8 Click **OK**.

The Process Editor opens with the newly created process with the version suffixed to the name.

9 Add the required steps to the process.

10 After you have completed your process, select **SAP > Save and Return to SAP** from the Process Editor menu.

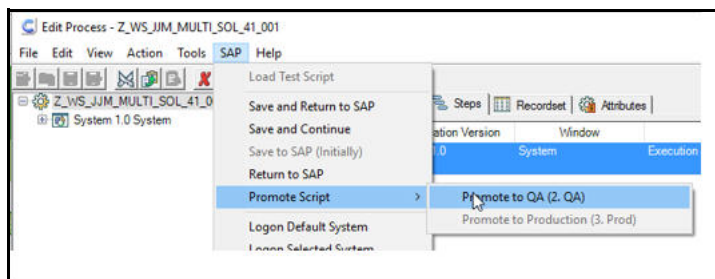
Next you will promote the process/script in Certify.

► **To promote the Certify process with the script:**

The Promote Script feature allows you to auto-detect a new version of a test script from Solution Manager and create a new corresponding Certify process.

1 In Solution Manager, click on the **Script** button to open your Certify process.

2 From the Process Editor menu, select **SAP > Promote Script > Promote to QA**.



The Promote Script message opens.

3 Click **OK** to confirm.

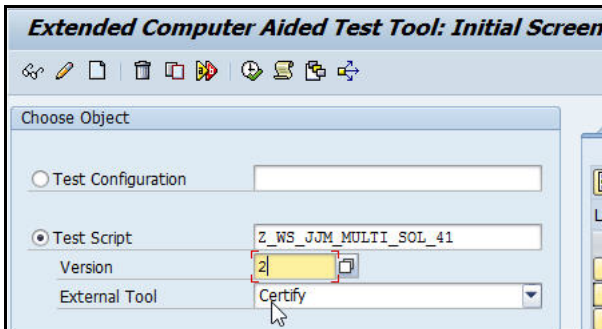
A similar folder hierarchy in the Quality root folder is created and the Certify process is copied to this folder.

4 Repeat this process for the Production folder by selecting **SAP > Promote Script > Promote to Production** and click **OK** to confirm.

After the script has been promoted to the Production folder, you can no longer promote it. Next, you need to create a new version of the script for the Maintenance folder.

► **To create a new version of the script for the Maintenance folder:**

- 1 Using the transaction code `secatt` in Solution Manager, create a second version of the same script.



- 2 Click the **Script** button to open Certify.  
The User Entries for External Tool dialog opens.
- 3 Enter Certify credentials.
- 4 Click **Continue**.  
A New Script Version message states that Certify detects a new version of the script, and a new version of the process is created in Certify with the new version suffixed to the script name.
- 5 Click **OK**.  
The Select Process Folder dialog opens in Certify.
- 6 Select the folder where the new process needs to be created.
- 7 Click **OK**.  
The Process Editor opens with the newly created process with the version suffixed to the name.
- 8 Add the required steps to the process.
- 9 After you have completed your process, from the Process Editor menu, select **SAP > Save and Return to SAP** from the Process Editor menu.
- 10 Promote the process/script in Certify. For more information on how to promote a script, see ["To promote the Certify process with the script:"](#) on page 32.

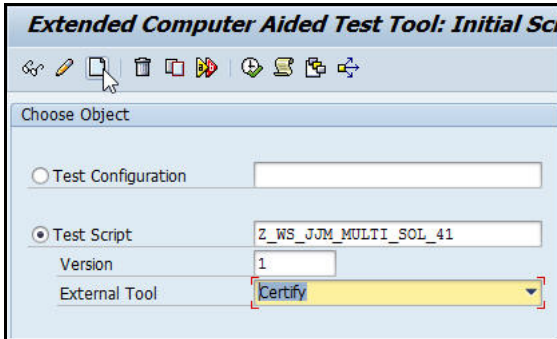
You can also use this process to create another version of the maintenance script by using a specific previous version. For example, you can make a copy of the first version to create a third version.

► **To migrate the existing Certify processes to Solution Manager:**

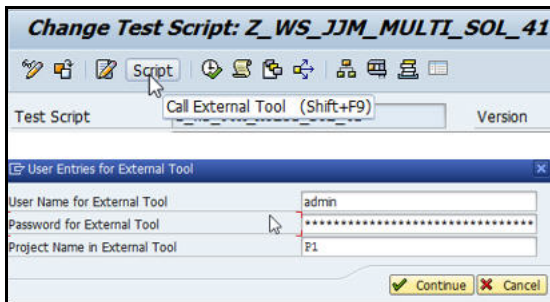
- 1 Create a new process in Certify and add a version suffix.

Example: Z\_WS\_JJM\_MULTI\_S OL\_MIGRATE\_001

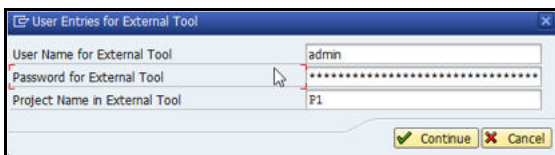
- 2 From Solution Manager, enter the transaction code `secatt` in the Command field of the SAP toolbar.
- 3 Press **<Enter>**.



- 4 Create a corresponding script in Solution Manager without the version suffix and save the script.
- 5 Click on the **Script** button to open Certify.



The User Entries for External Tool dialog opens.



- 6 Enter your Certify credentials.
- 7 Click **Continue**.

The Select Process Folder dialog opens in Certify. All processes that have been already linked to Solution Manager are highlighted in blue.

- 8 Select the process and click **OK**.

A message opens stating that the process is not linked and asks if you want to confirm that the selected process should be linked to the Solution Manager script.

- 9** Click **Yes** to link the selected process.  
The Process Editor opens the existing process.
- 10** Add the required steps to the process.
- 11** After you have completed your process, select **SAP > Save and Return to SAP** from the Process Editor menu
- 12** Promote the process/script in Certify. For more information, see ["To promote the Certify process with the script:" on page 32.](#)
- 13** Repeat this process for Certify processes that are not linked to the Solution Manager.



## Appendix A Troubleshooting

This appendix provides guidance on how to troubleshoot your integration between Worksoft Certify and SAP Solution Manager.

---


### Verifying ECATT\_ET\_USR User is Not Locked

---

The ABAP code in Solution Manager uses a well-known user name and password. The well-known user name is **ecatt\_et\_usr**. User names are generally not case sensitive, so `ecatt_et_usr` and `ECATT_ET_USR` are treated the same.

This user name and password is sent from Solution Manager to Certify where Certify uses the credentials to make Remote Functional Calls (RFC) back into Solution Manager. In order for calls to work, the user name `ECATT_ET_USR` must not be locked. If this user name is locked, you need to unlock it.

► **To verify ECATT\_ET\_USR is not locked:**

- 1** Sign in to Solution Manager.  
The SAP Easy Access Solution Manager screen opens.
- 2** Enter the transaction code `su01` in the Command field.
- 3** Press **<Enter>**.  
The User Maintenance screen opens.
- 4** Click the **Lock/Unlock**  button.  
If the user is locked, a message opens stating it is locked.
- 5** Click the **Unlock** button to unlock the user.  
The `ECATT_ET_USR` is unlocked.
- 6** Save your changes to this user.

---

## Troubleshooting Solution Manager Passwords

---

To prevent password problems, do not change the password for the **ecatt\_et\_usr** user in Solution Manager. If you need to change the password, it is best that you delete the `ecatt_et_usr` user and recreate the `ecatt_et_usr` again.

If you are still having problems, add an entry to the Certify configuration file to override the values of the Solution Manager user name and password as a workaround.

► **To add an entry to the Certify configuration file:**

- 1 Before you enable detailed logging, you must shut down Certify and all SAP GUI sessions.
- 2 Use the Windows Task Manager to verify that the **wsecattwrapper.exe** process is not running. If this process is running, turn it off.

- 3 Locate the Certify configuration file that is in the following directory:

```
C:\Program Files (x86)\Worksoft\Certify\Client\Worksoft.Certify.exe.config
```

- 4 Open the **Worksoft.Certify.exe.config** file in Notepad or another text editor.
- 5 In the configuration file, scroll down to the **<appSettings>** section.
- 6 Just beneath the `<appSettings>` tag, copy and paste the following line into the configuration file:

```
<add key="EcattDebugRFCUser" value="ecatt_et_usr" />
<add key="EcattDebugRFCPassword" value="correct password" />
```

**Example:**

```
<appSettings>
  <add key="EcattDebugRFCUser" value="ecatt_et_usr" />
  <add key="EcattDebugRFCPassword" value="correct password" />
```

- 7 Save the updated configuration file.

Certify now overrides the values for the user name and password provided by Solution Manager, and it will use the values from the configuration file.



## Appendix B Setting Explicit Permissions for Clients

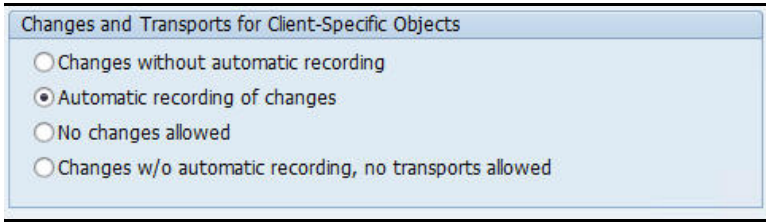
This Appendix provides guidance on setting permissions for new clients.

The screenshot shows the 'New Entries: Details of Added Entries' configuration screen in SAP Solution Manager. The interface includes several sections for client configuration:

- Client:** A text field with a checkmark icon.
- City:** A text field.
- Logical system:** A text field.
- Std currency:** A text field.
- Client role:** A dropdown menu.
- Last Changed By:** A text field.
- Date:** A date field.
- Changes and Transports for Client-Specific Objects:** A group of radio buttons:
  - Changes without automatic recording
  - Automatic recording of changes
  - No changes allowed
  - Changes w/o automatic recording, no transports allowed
- Cross-Client Object Changes:** A dropdown menu with the selected option 'Changes to Repository and cross-client Customizing allowed' highlighted.
- Protection: Client Copier and Comparison Tool:** A dropdown menu with the selected option 'Protection level 0: No restriction'.
- CATT and eCATT Restrictions:** A dropdown menu with the selected option 'eCATT and CATT Not Allowed'.
- Restrictions:** A group of checkboxes:
  - Locked due to client copy
  - Protection against SAP upgrade

If you do not use the parameters listed in the procedure ["To create explicit permission for every client that will test via eCATT:"](#) on page 9 in [Chapter Chapter 2, "Configuring SAP Solution Manager,"](#) on page 7, then test creation, test execution, and TBOM generation may be affected. This Appendix shows if the parameter selection impacts any of these actions.

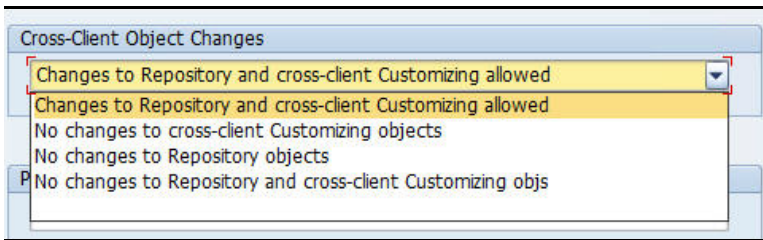
## Changes and Transports for Client-Specific Objects Options



If you select any other option than the one shown above, listed below is what will happen:

Action	Option/Impact
Test Creation/Revision	All options - No impact
Test Execution	All options - No impact
TBOM Generation	All options - No impact

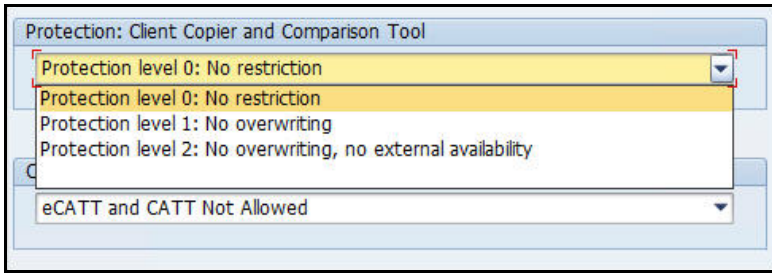
## Cross-Client Object Changes



If you select any other option than the one shown above, listed below is what will happen:

Action	Option/Impact
Test Creation/Revision	<p><b>No changes to cross-client customizing objects</b> - No impact</p> <p><b>No changes to repository objects</b> - Yes, unable to create tests</p> <p><b>No changes to repository and cross-client customizing objs</b> - Yes, unable to create tests</p>
Test Execution	All options - No impact
TBOM Generation	All options - No impact

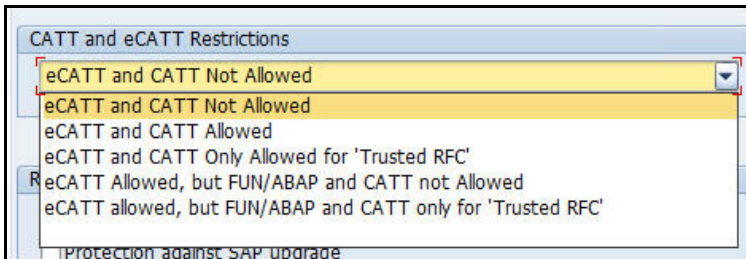
## Protection: Client Copier and Comparison Tool



If you select any other option than the one shown above, listed below is what will happen:

Action	Option/Impact
Test Creation/Revision	All options - No impact
Test Execution	All options - No impact
TBOM Generation	All options - No impact

## CATT and eCATT Restrictions



If you select any other option than the one shown above, listed below is what will happen:

Action	Option/Impact
Test Creation/Revision	All options - No impact
Test Execution	All options - No impact
TBOM Generation	All options - No impact